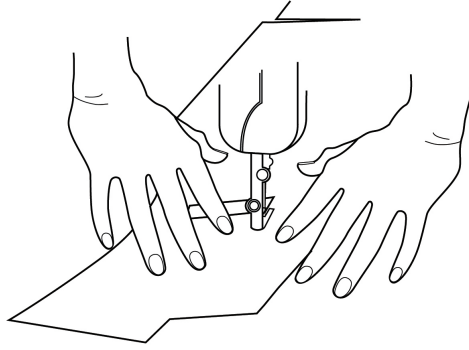


DesignOptions

# Hunting Jacket



# Make

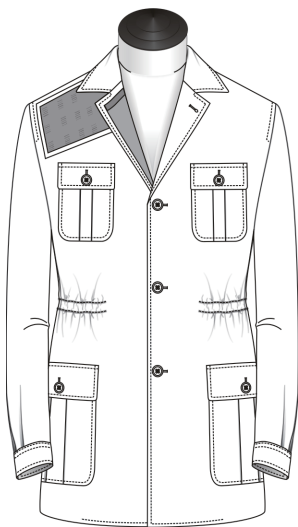


## Traditional

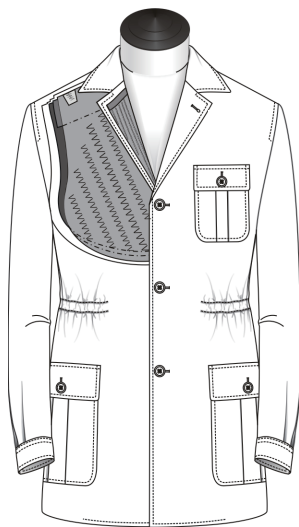
Handwork in 'Traditional' make:

Button attachment  
Collar front bottom  
Bottom lining/facing  
Flower loop

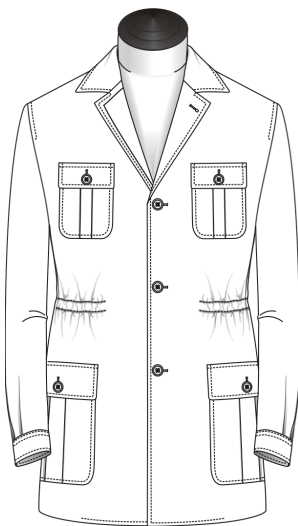
# Make



Unconstructed

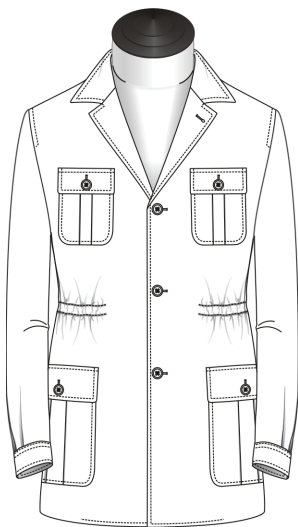


Half Canvas

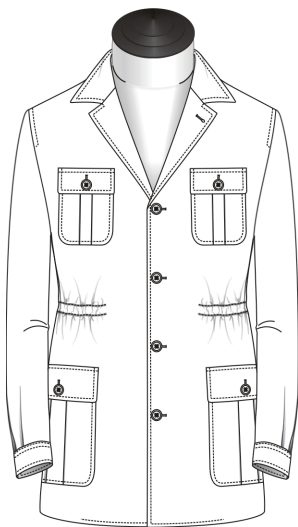


Soft Jacket

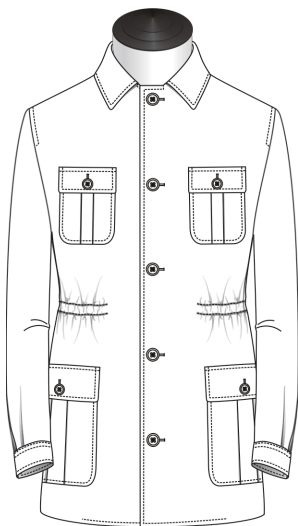
# Closure



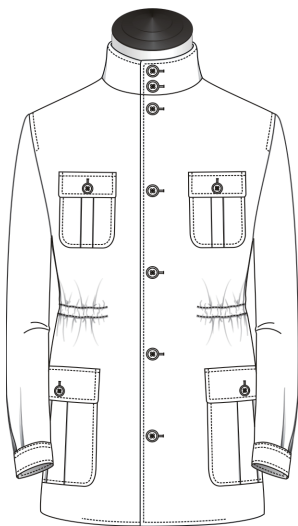
3 Button



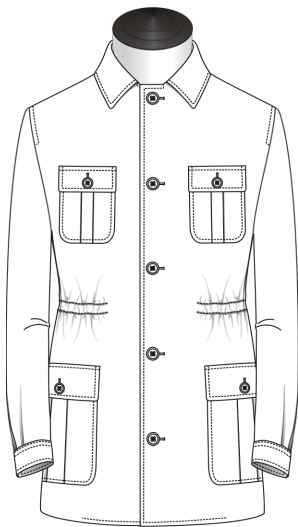
4 Button



5 Button



7 Button

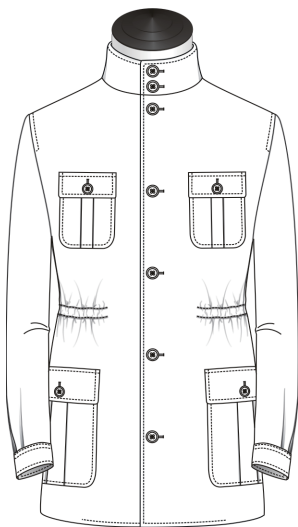


5 Button & Zipper





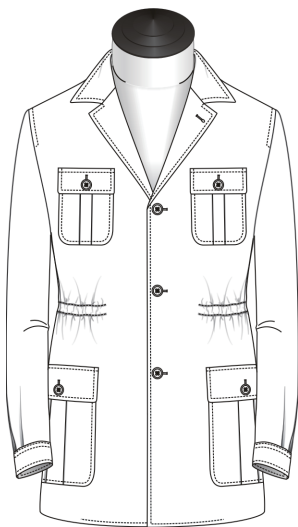
# Closure



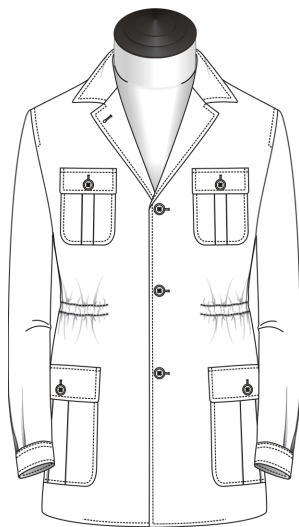
7 Button & Zipper



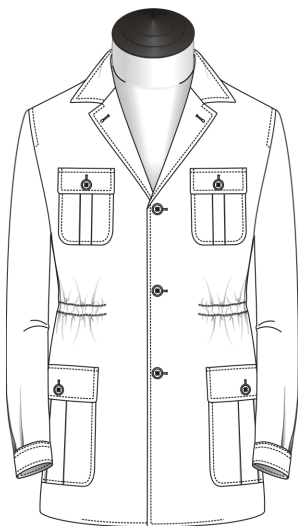
# Lapel Buttonhole Position



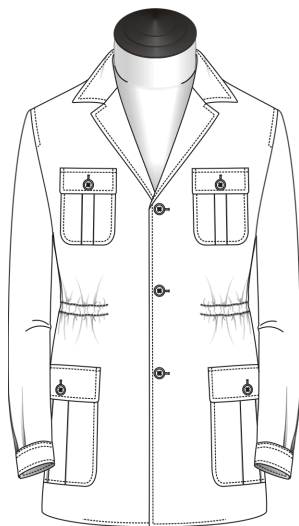
Left



Right

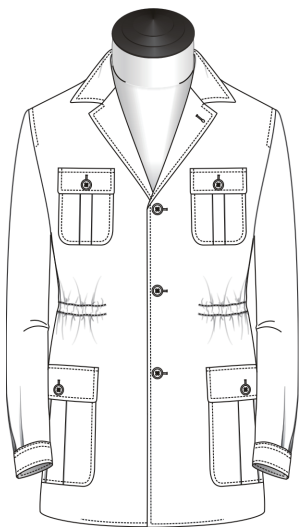


Left & Right

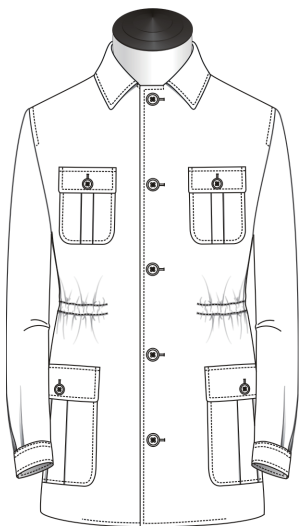


No Buttonhole

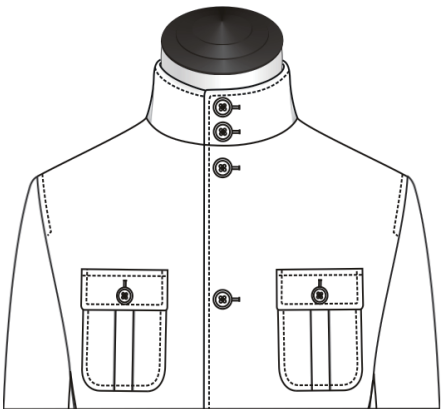
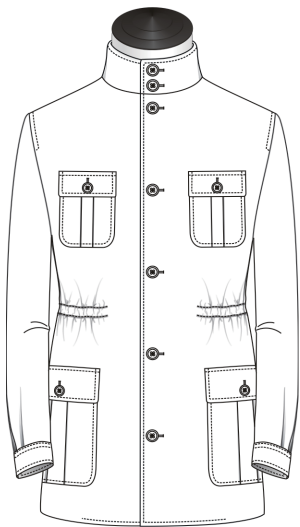
# Collar



Notch Lapel w Long Collar

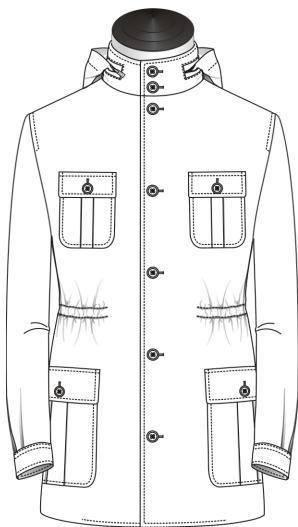


Medium Collar no Lapel

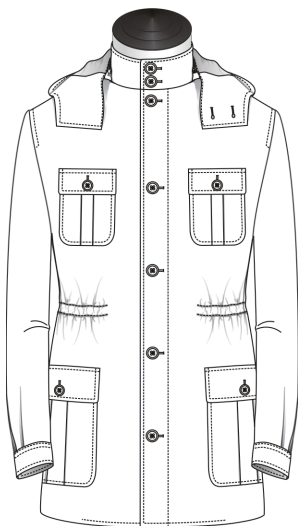


2B Stand Up Collar

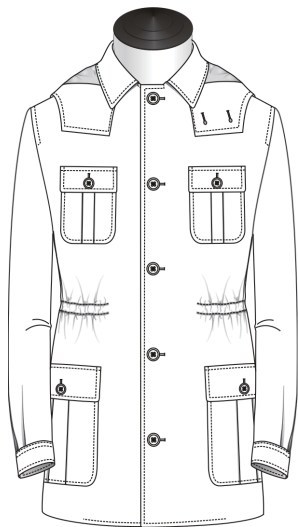
# Collar



2B Stand Up Collar w Fold-Away Hood

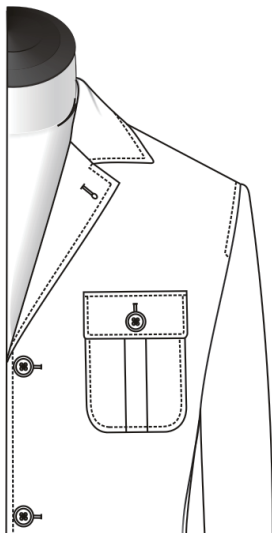


2B Stand Up Collar w Detachable 2B Flap Hood

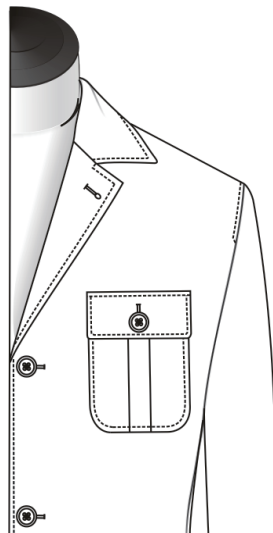


Medium Collar w Detachable 2B Flap Hood

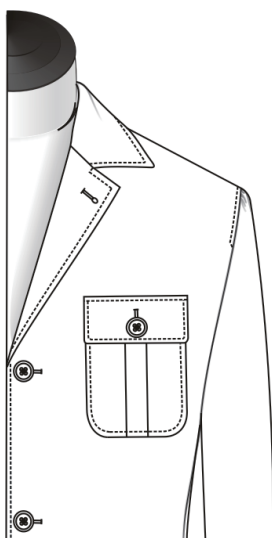
# Shoulder Type



Standard

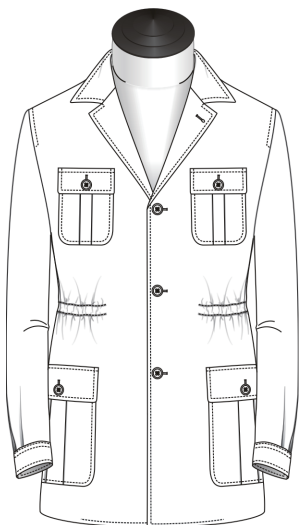


Soft

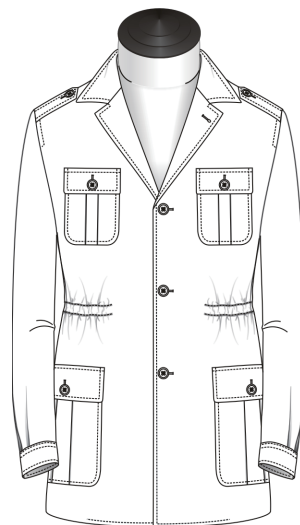


Unconstructed  
(no shoulder pad)

# Shoulder Epaulettes

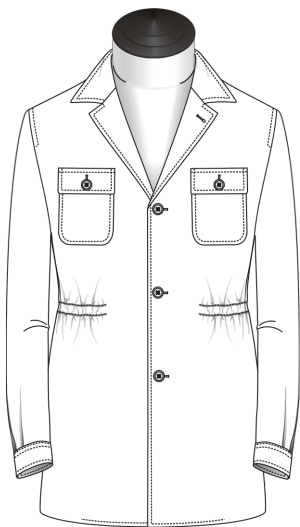


N/A

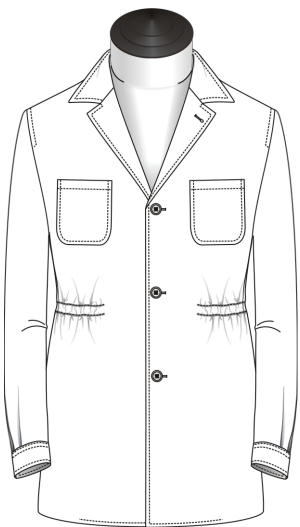


Yes

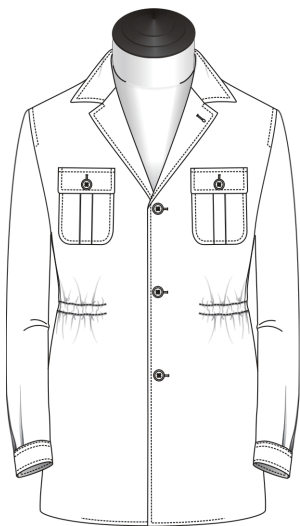
# Chest Pocket



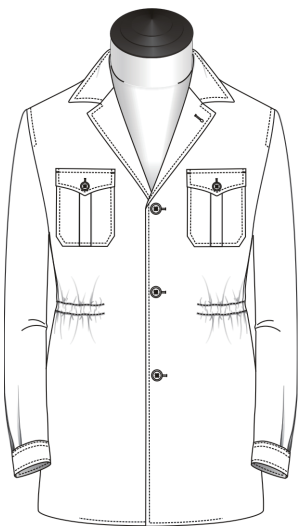
Curved Patch w Straight  
Flap & Btn



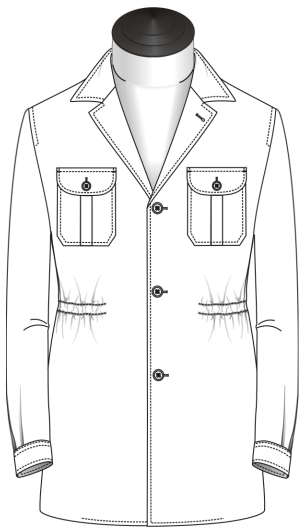
Patch



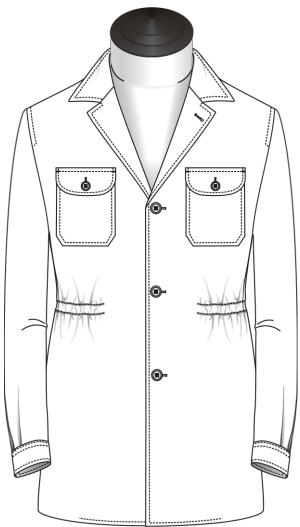
Curved Pleated Patch w  
Straight Flap & Btn



Mitered Pleated Patch w  
Pointed Flap & Btn

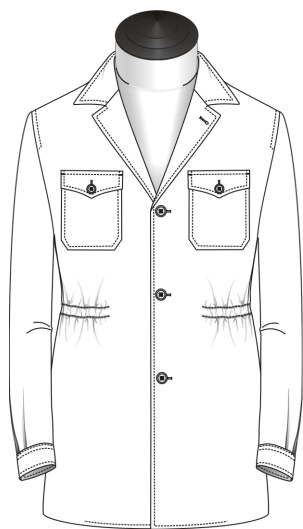


Mitered Pleated Patch w  
Rounded Flap & Btn

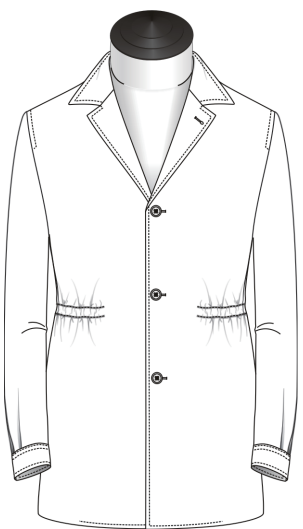


Mitered Patch w  
Rounded Flap & Btn

# Chest Pocket



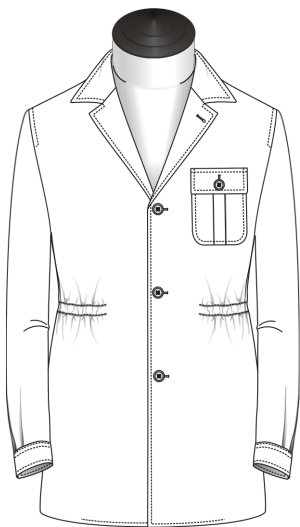
Mitered Patch w Pointed Flap & Btn



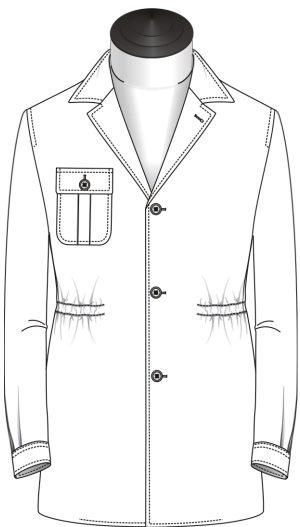
N/A



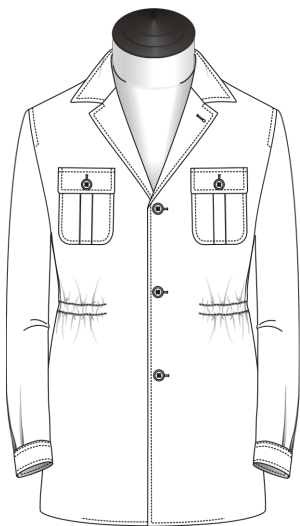
# Chest Pocket Position



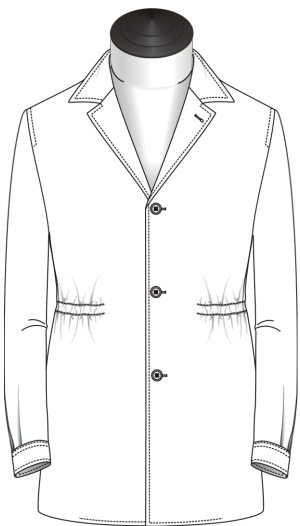
Left



Right

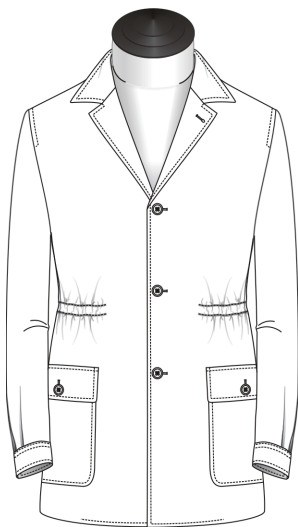


Left & Right

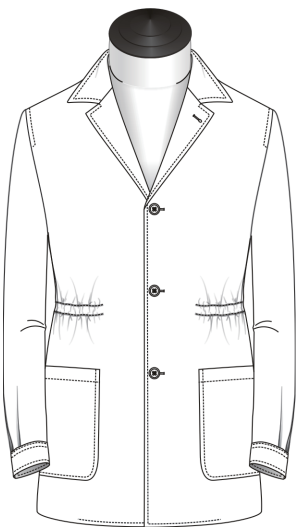


N/A

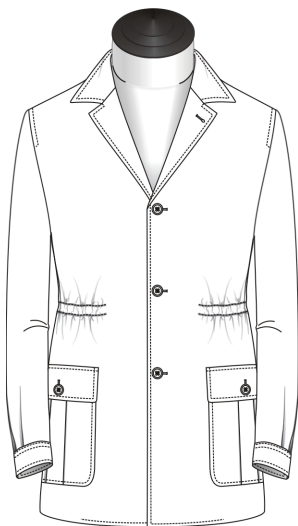
# Side Pockets



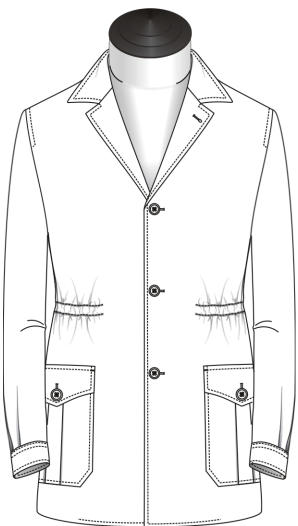
Curved Patch w Straight Flap



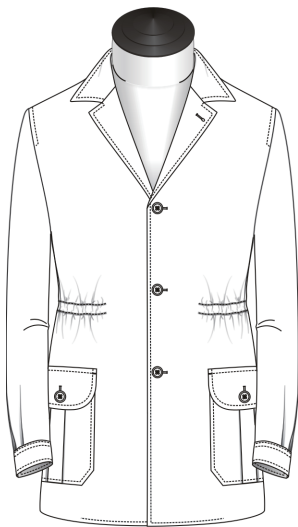
Patch



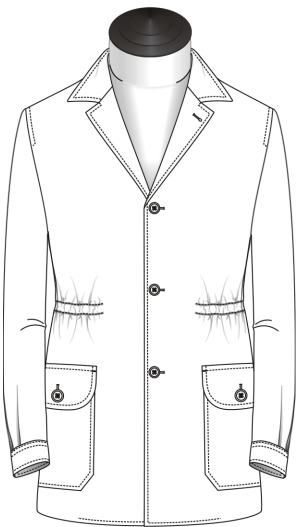
Curved Pleated Patch w  
Straight Flap & Btn



Mitered Pleated Patch w  
Pointed Flap & Btn

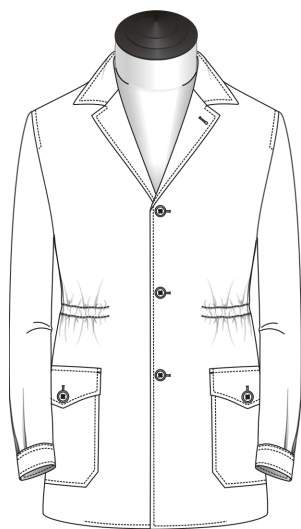


Mitered Pleated Patch w  
Rounded Flap & Btn



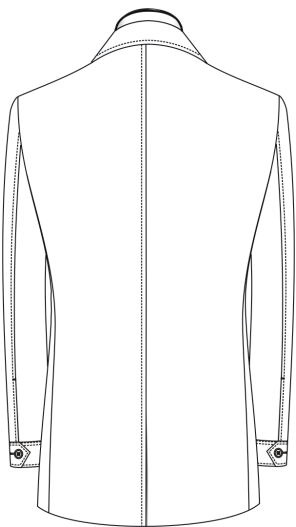
Mitered Patch w  
Rounded Flap & Btn

# Side Pockets

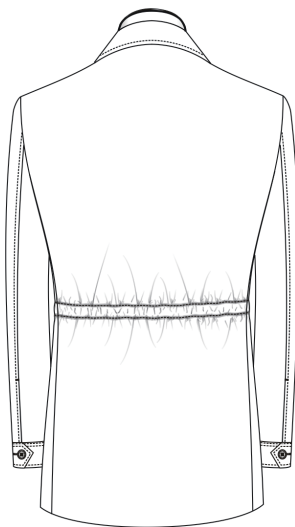


Mitered Patch w Pointed Flap & Btn

# Back Seam

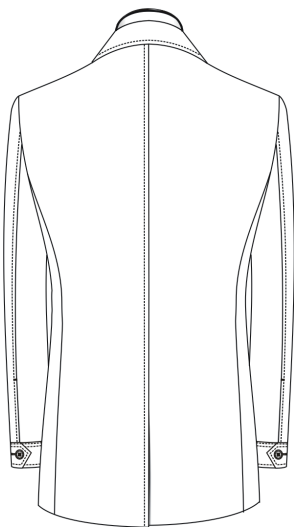


Standard

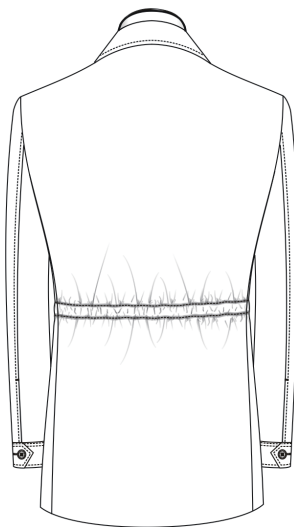


(N/A)  
Internal Draw String

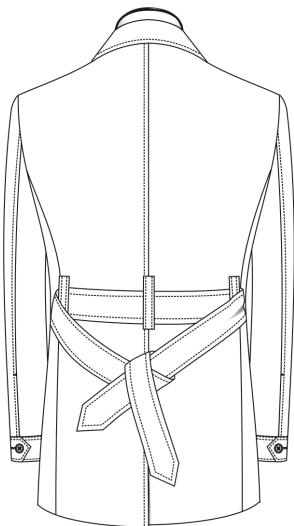
# Back Style



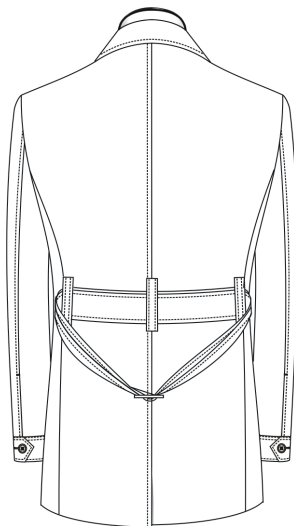
Standard



Internal Draw String

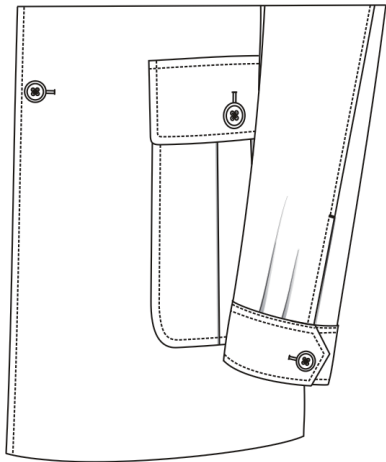


Removable Belt w  
Sewn-In Loops

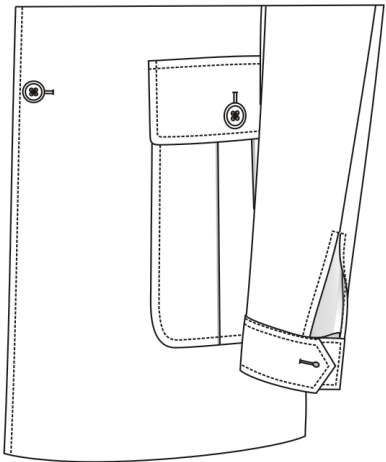


Removable Belt w  
Sewn-In Loops & buckle

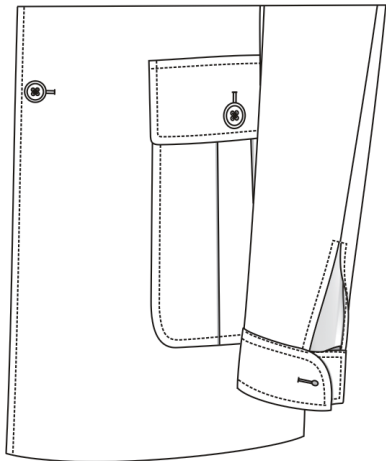
# Cuff Finishing



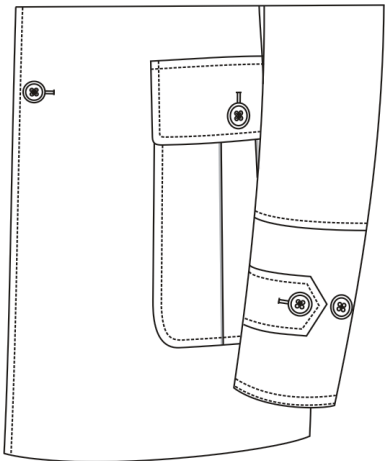
1B Pointed Cuff w Sleeve Pleats



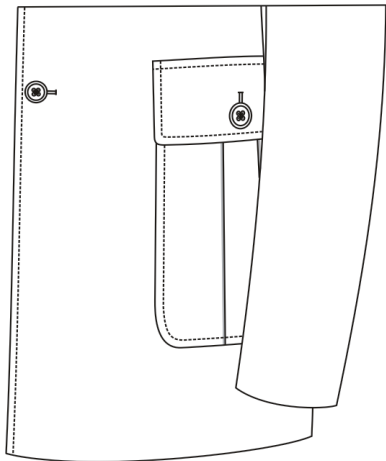
1B Pointed Cuff no Sleeve Pleats



1B Rounded Cuff no Sleeve Pleats

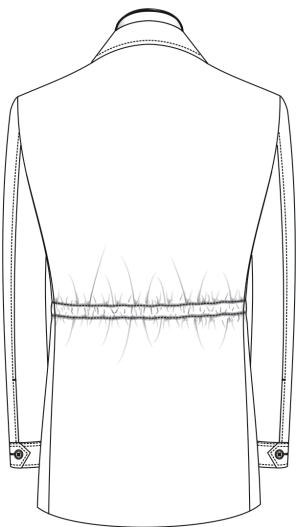


2B Adjustable Wide Cuff

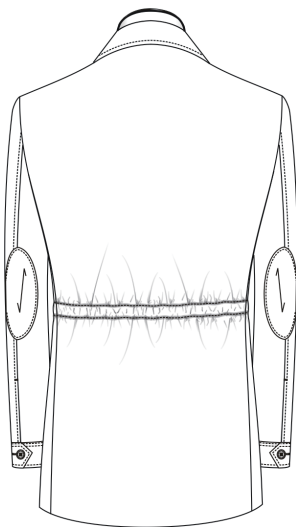


Plain

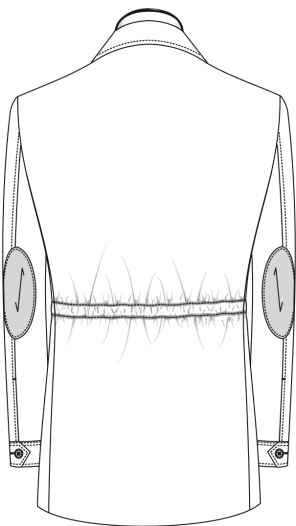
# Elbow Patches



N/A

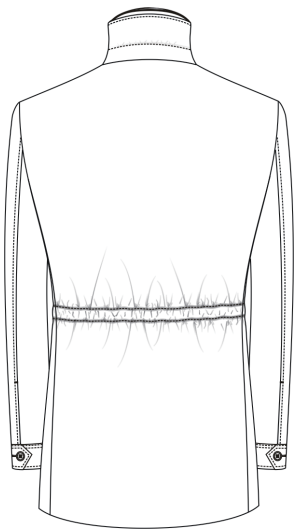


Fabric

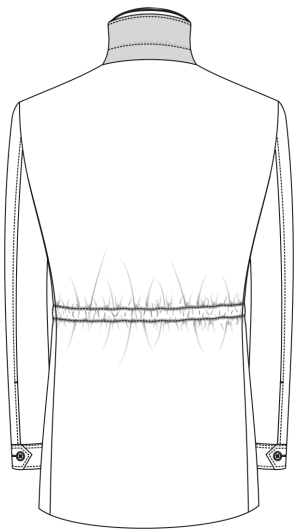


Suede

# Undercollar



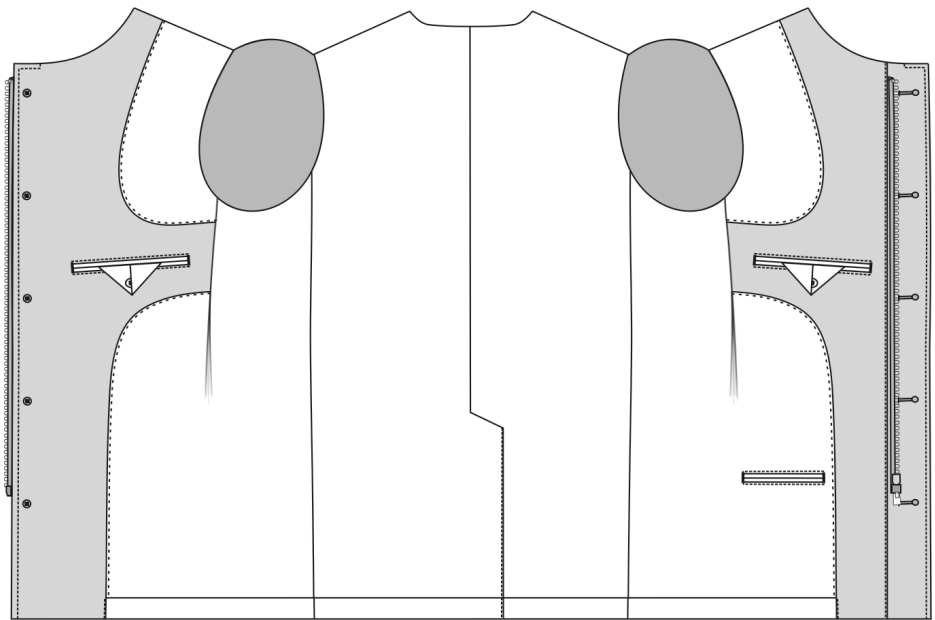
Fabric



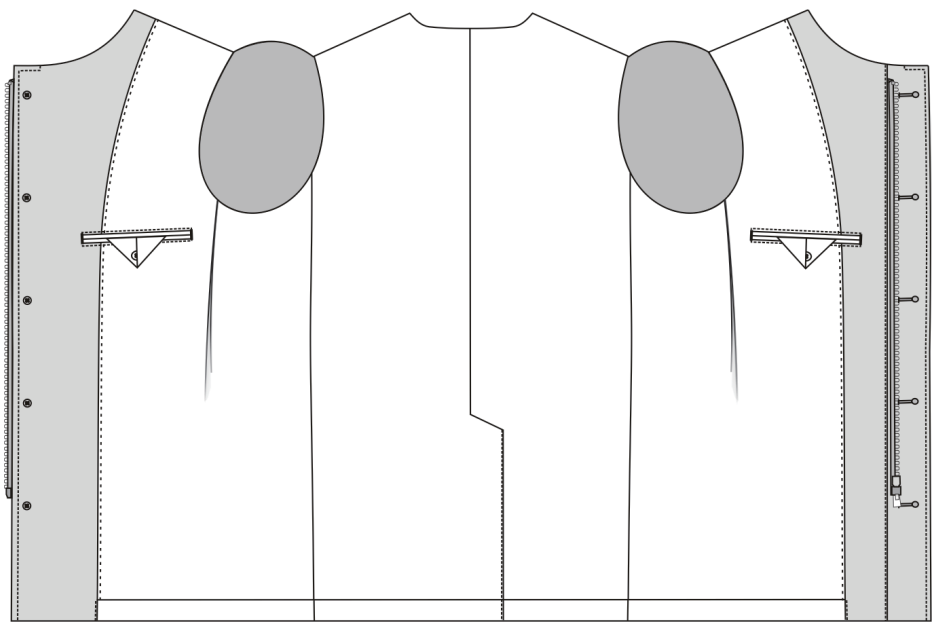
Suede



# Interior Construction

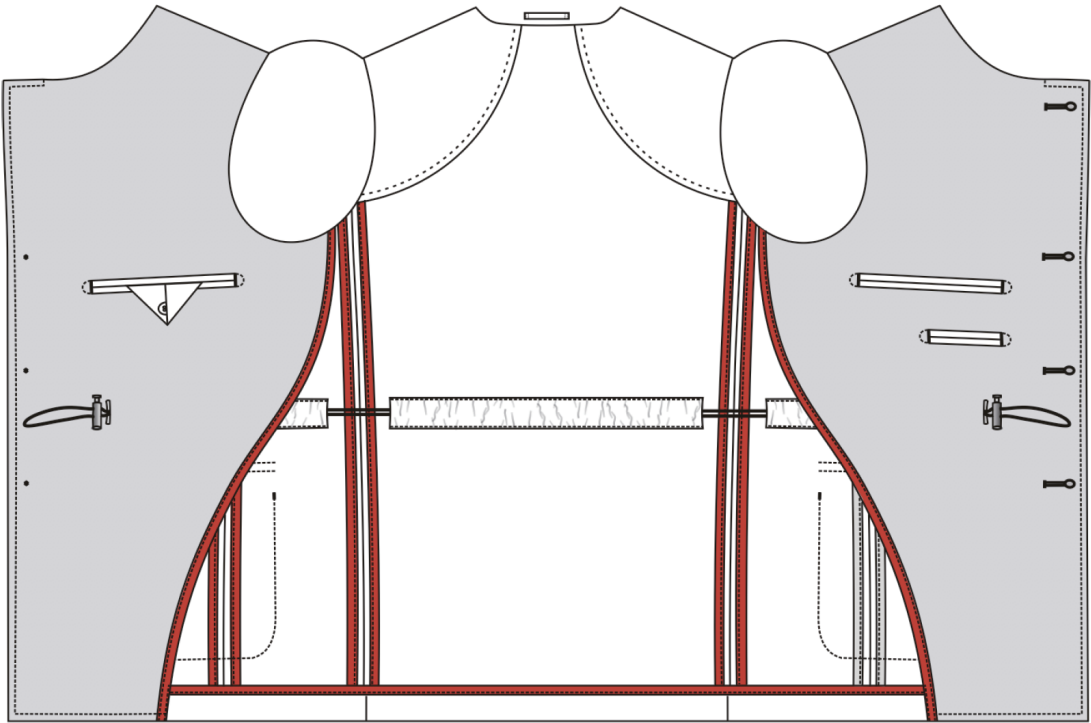


Curved French Facing



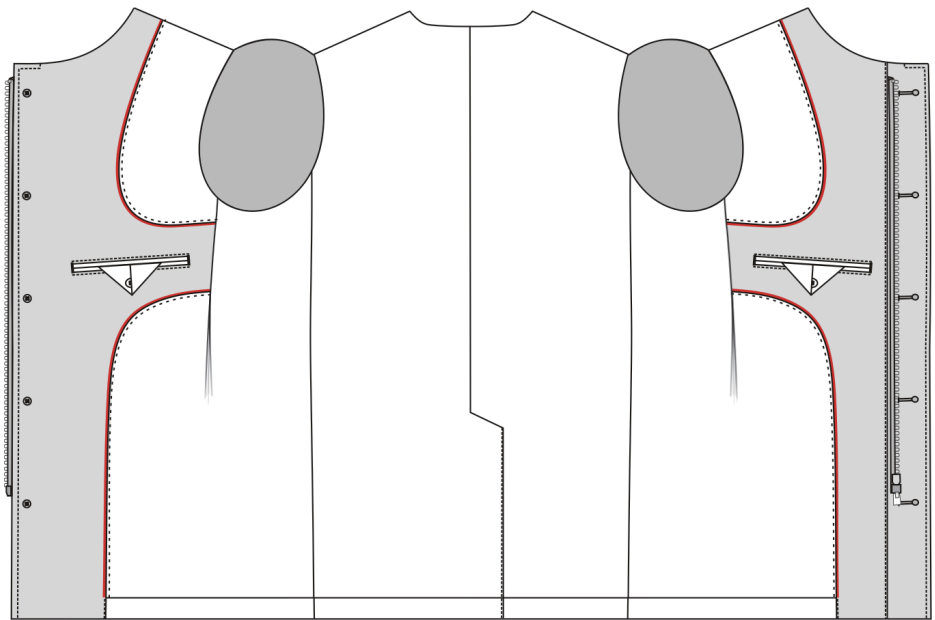
Classic with Fabric Jetted Pockets

# Interior Construction

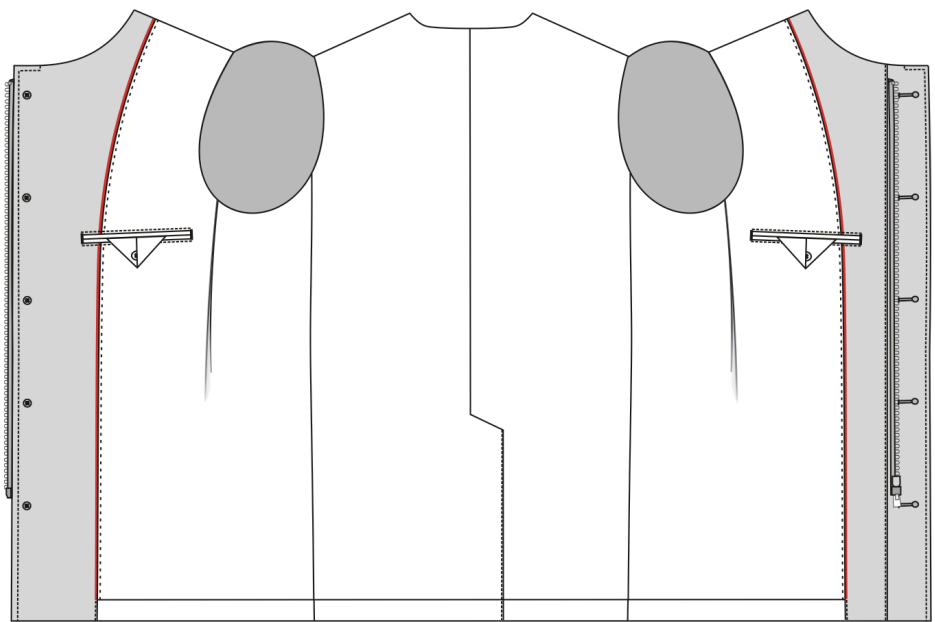


Unlined with Fabric Facing

# Lining Edge Piping Treatment

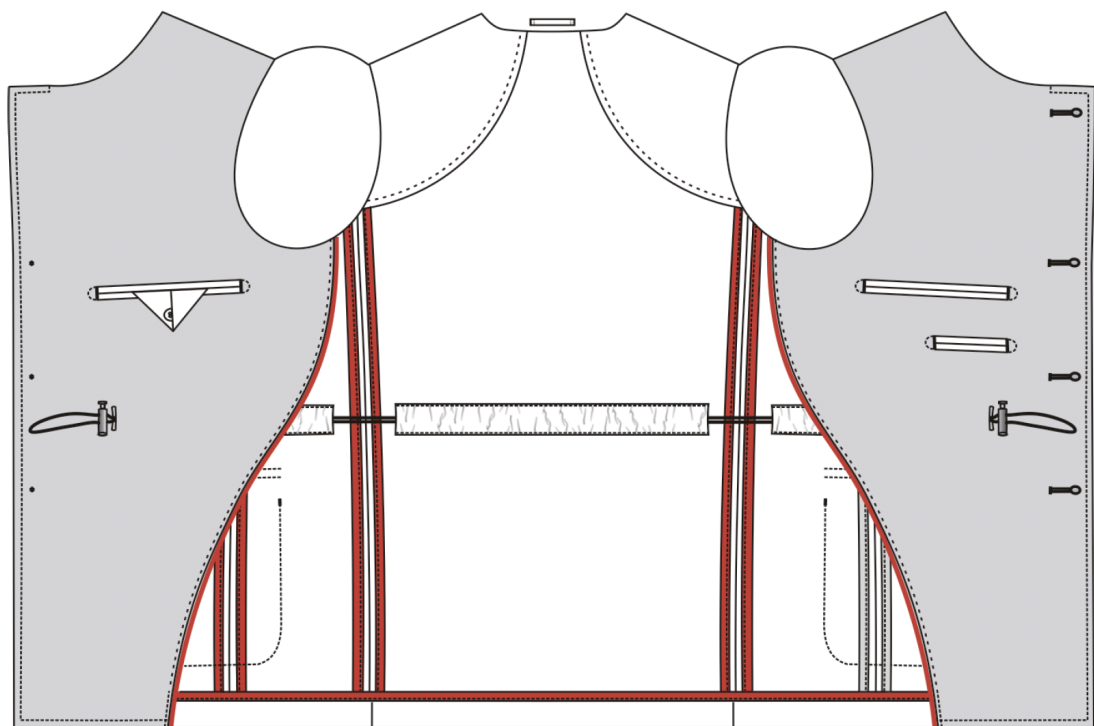


Curved French Facing



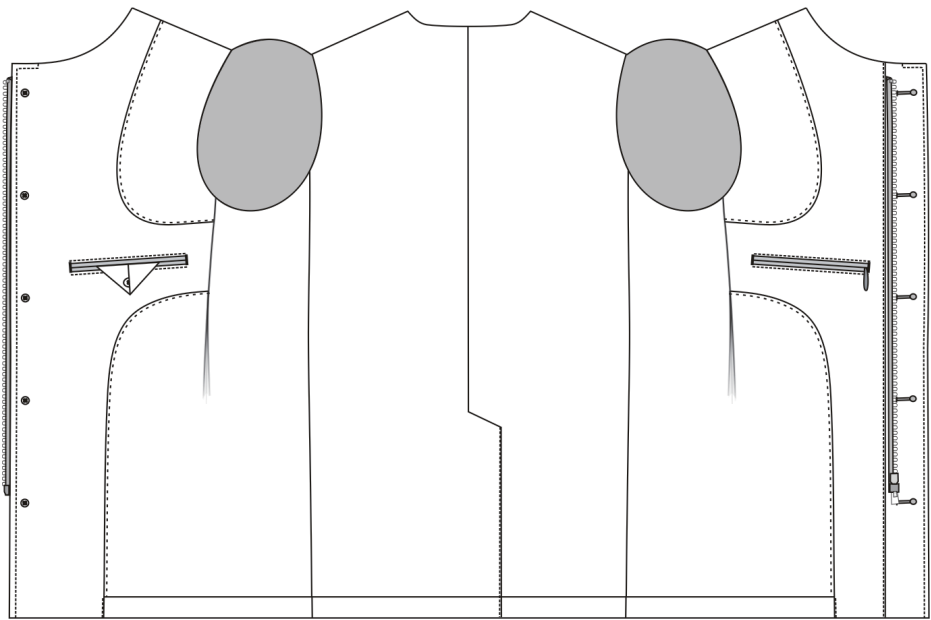
Classic with Fabric Jetted Pockets

# Lining Edge Piping Treatment

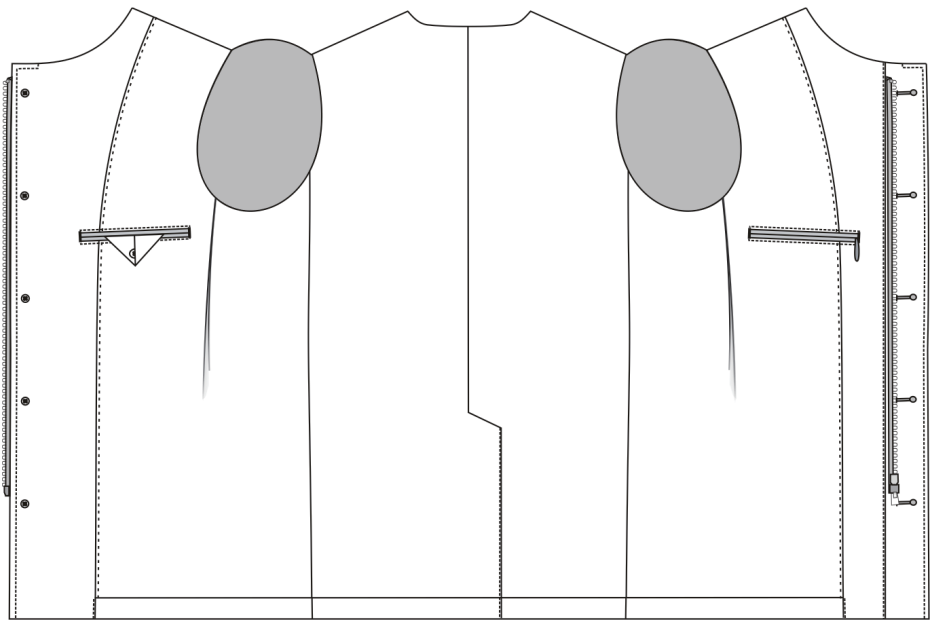


Unlined with Fabric Facing

# Interior Left Pocket zipper

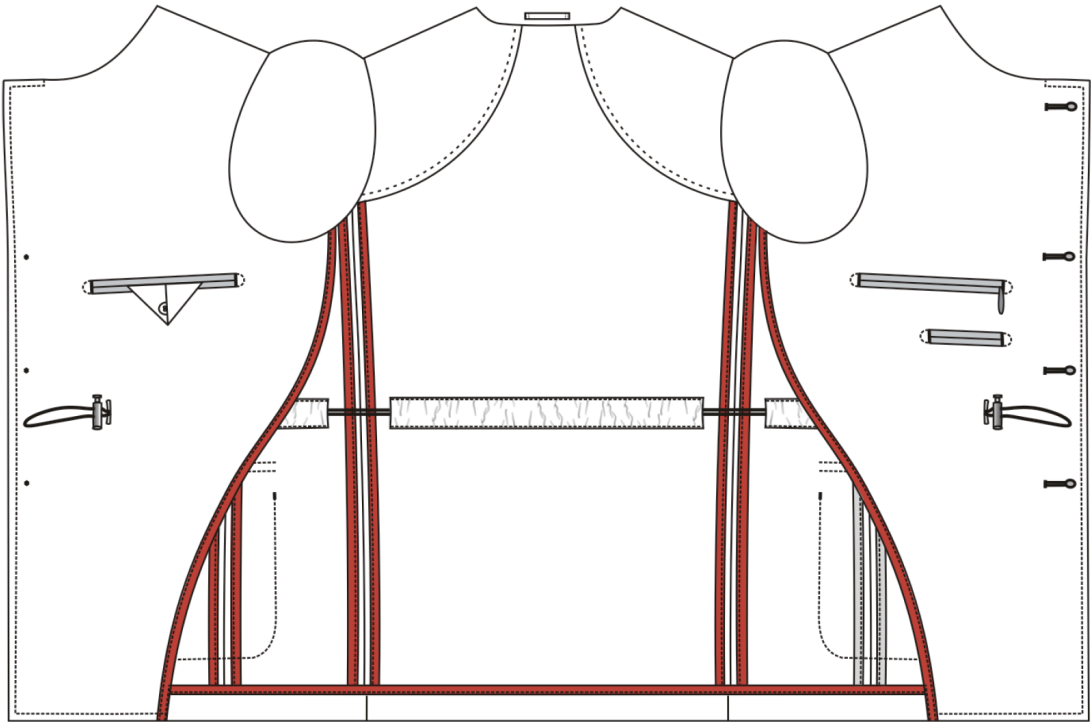


Curved French Facing



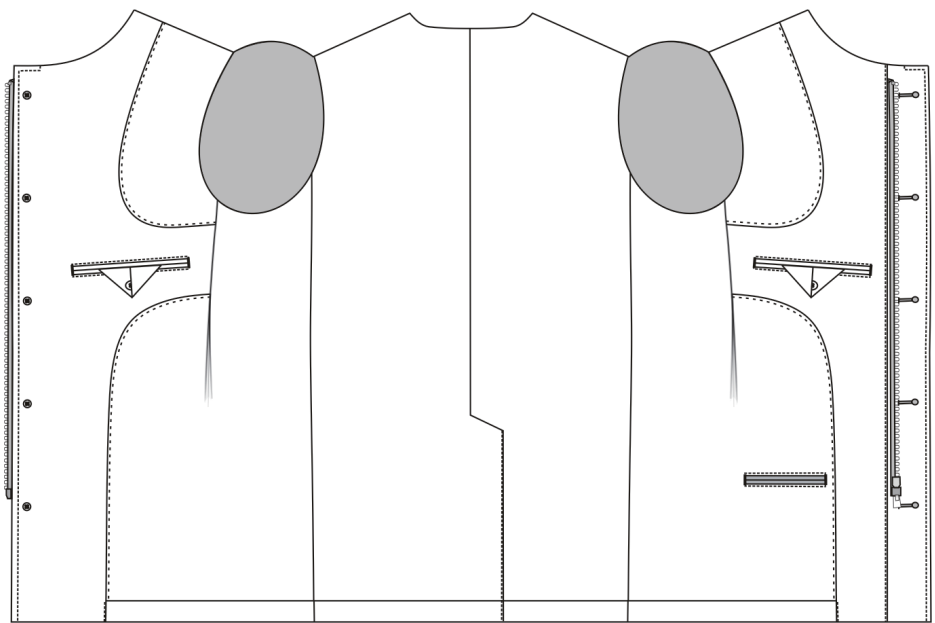
Classic with Fabric Jetted Pockets

# Interior Left Pocket zipper

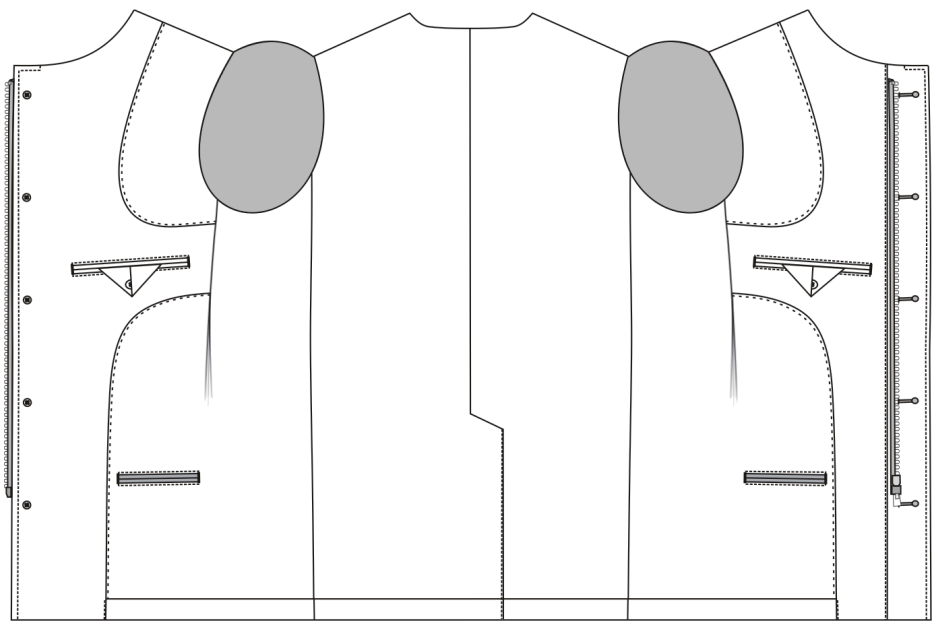


Unlined with Fabric Facing

# Utility Pocket

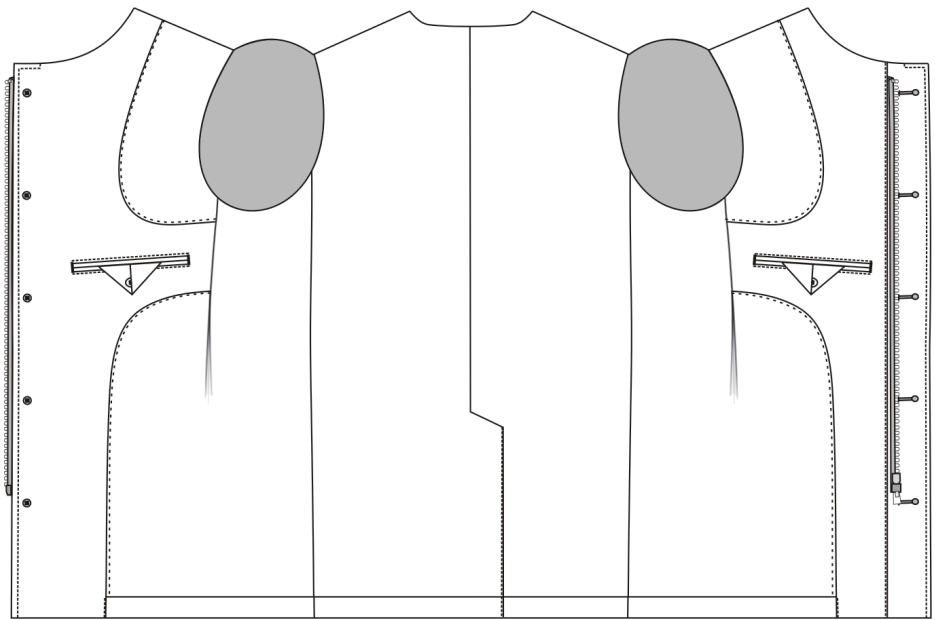


Left(standard)



Left & Right

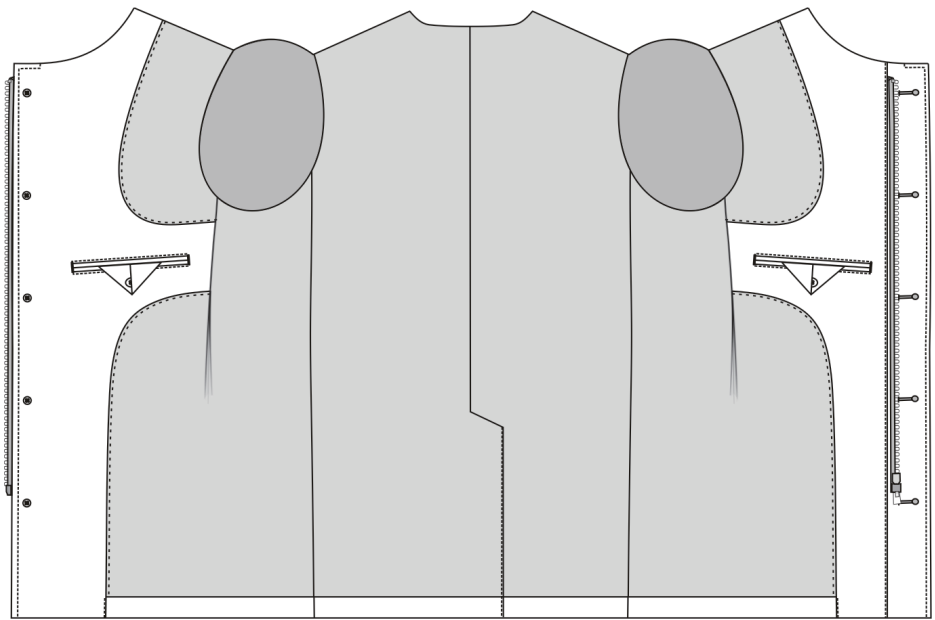
# Utility Pocket



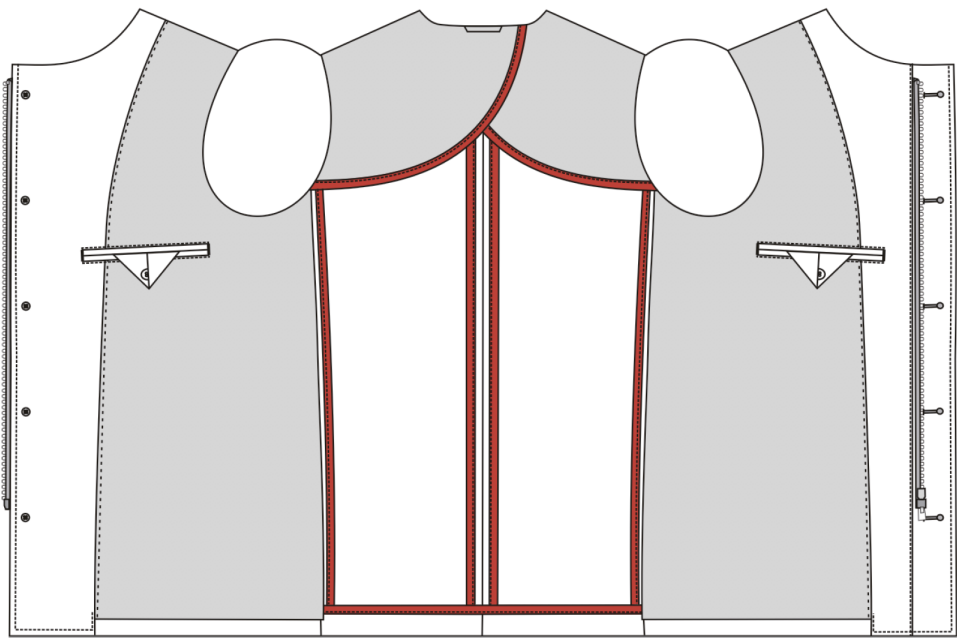
None



# Lining Placement

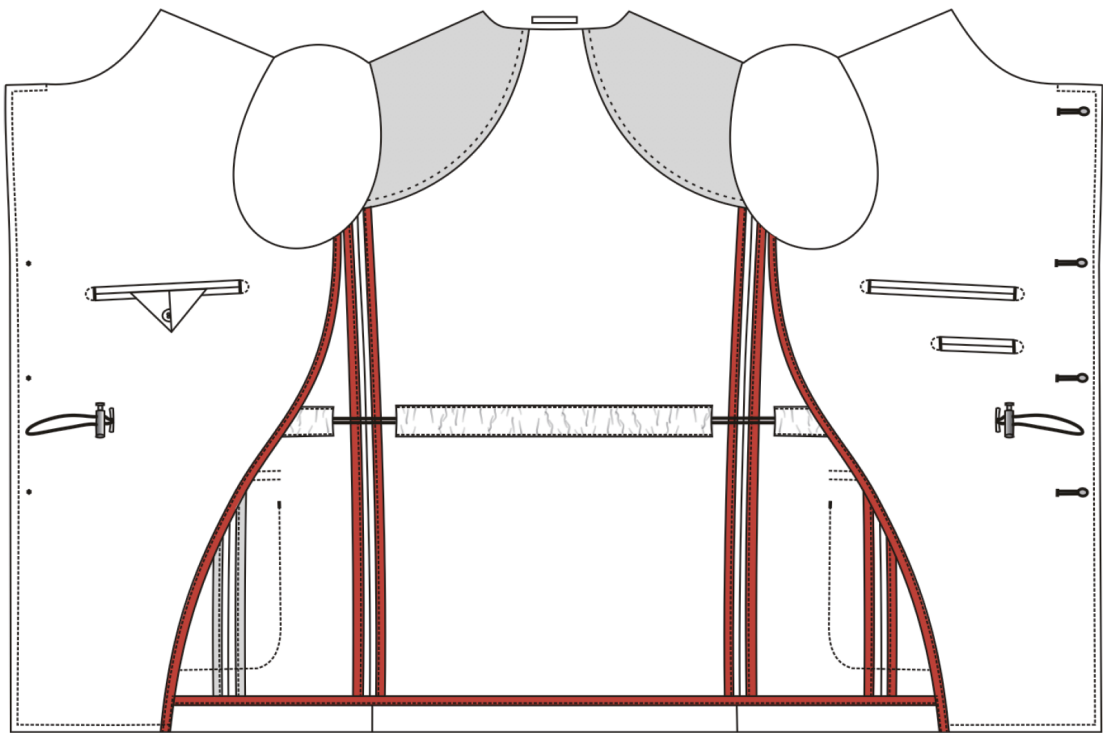


Fully Lined



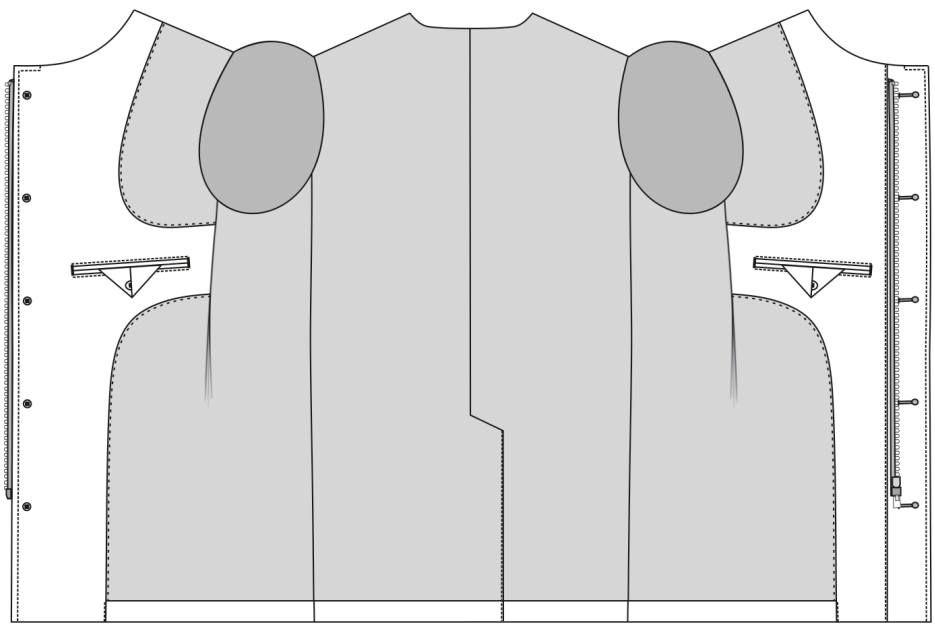
Half Lined with Q Wedge

# Lining Placement

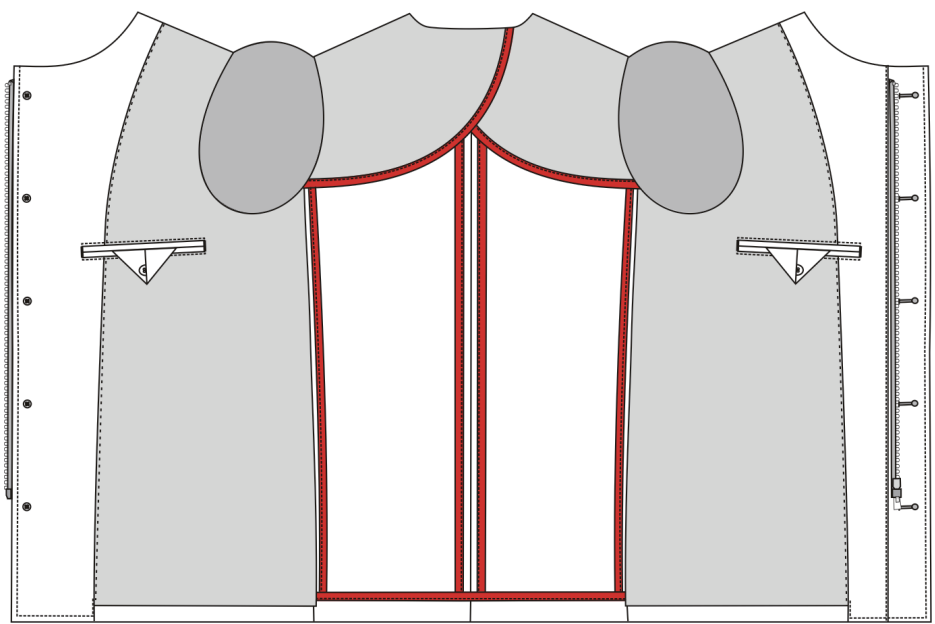


Unlined w Butterfly Wedge & Piped Seams

# Exposed Seam Piping w Lining

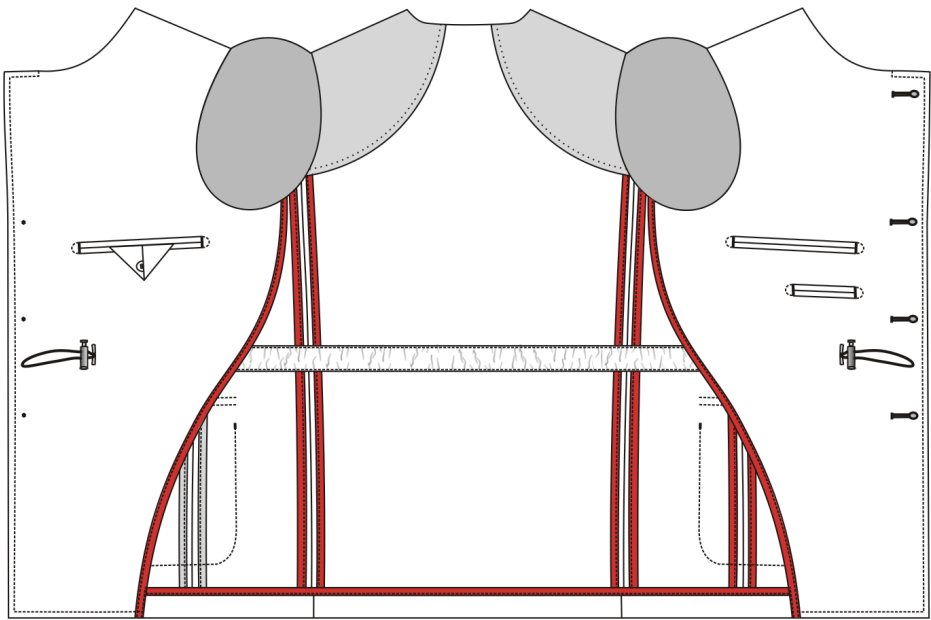


N/A



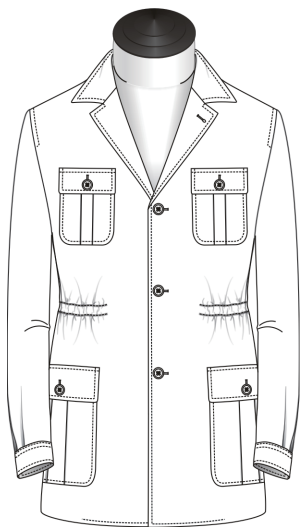
Half Lined with Q Wedge

# Exposed Seam Piping w Lining



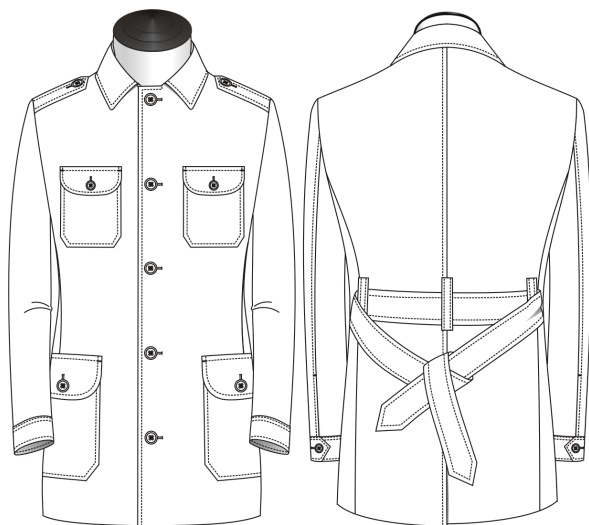
Unlined

# Bottom



Straight

# Stitching

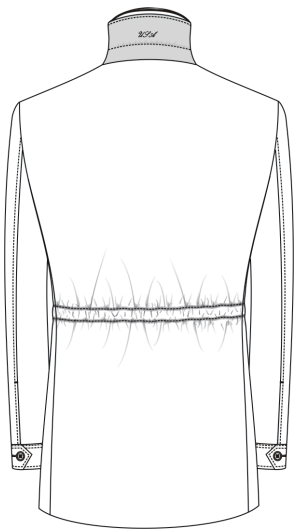


Standard  
Top Stitching 6mm (by Machine)

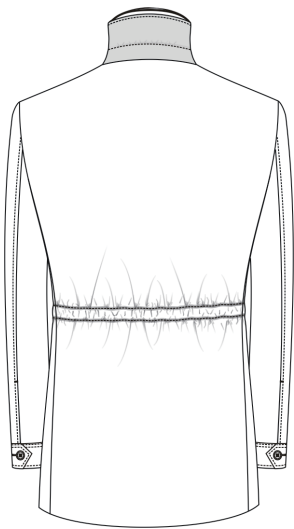
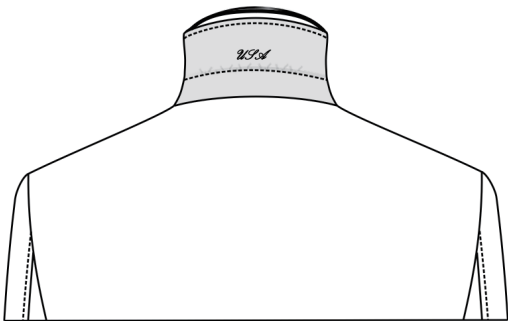


Internal Draw String  
Top Stitching 6mm (by Machine)

# Monogram Under Collar

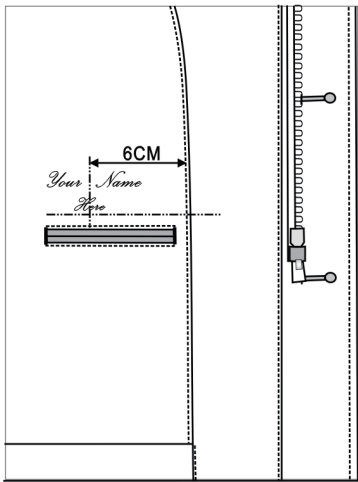


Yes

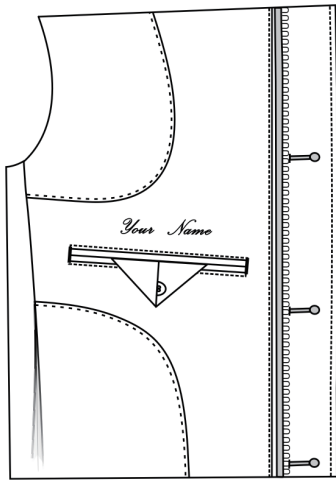


No

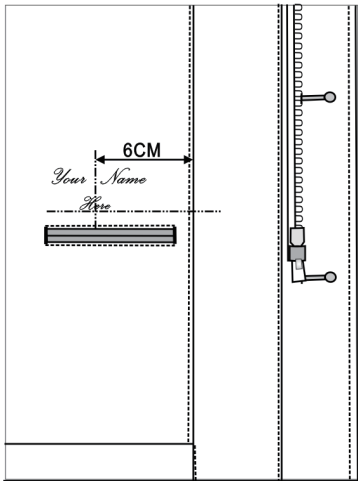
# Interior Lining Monogram



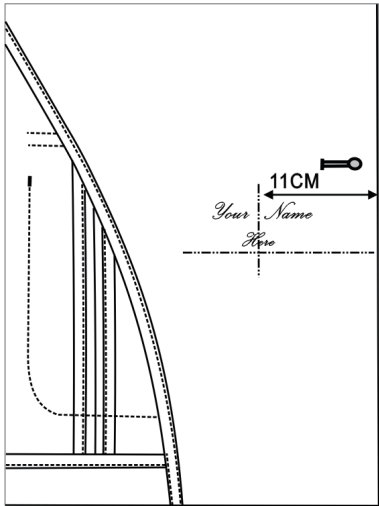
Curved french facing



Above Left Pocket



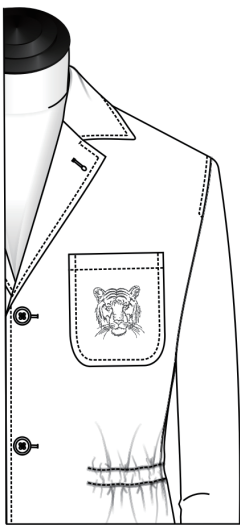
Jet



Unlined



# Breast Pocket Emblem



Patch



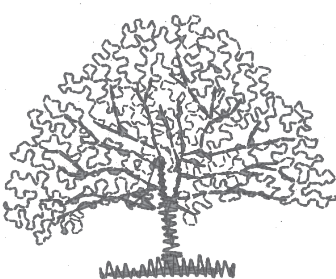
MP01



MP02

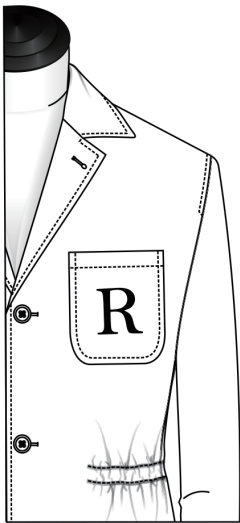
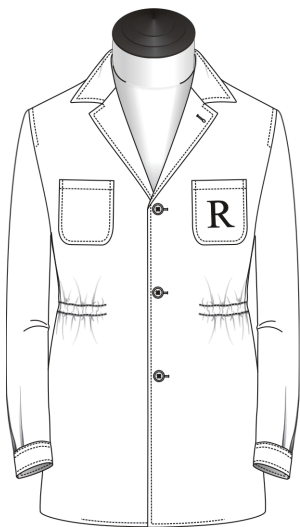


MP03



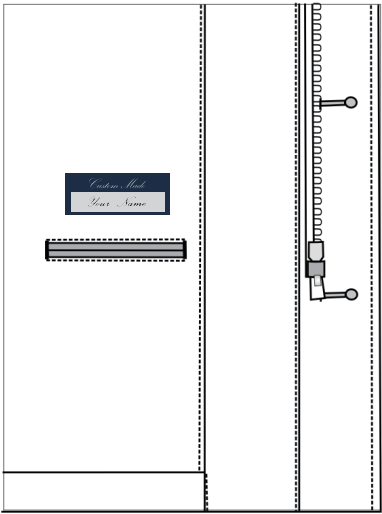
MP04

# Breast Pocket Monogram

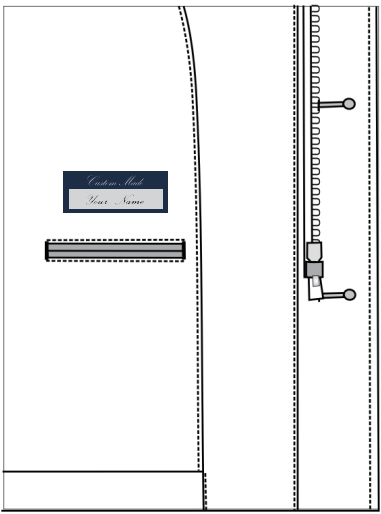


Patch

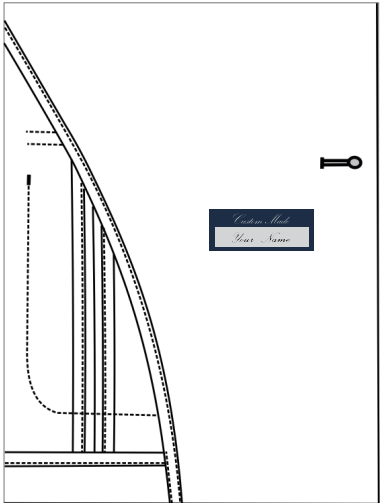
# Interior Monogram Label



Jetté



Curved French Facing



Unlined