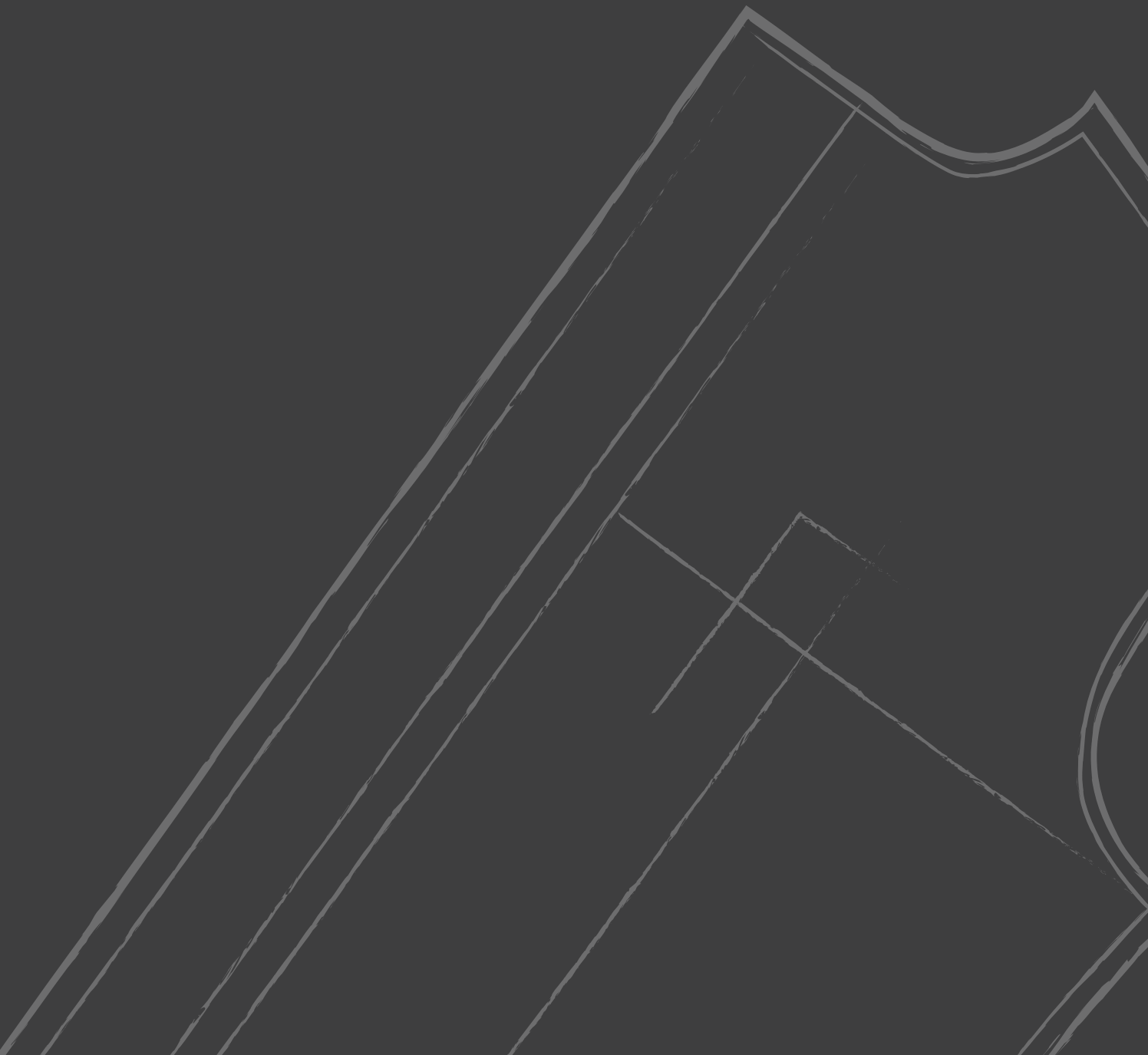
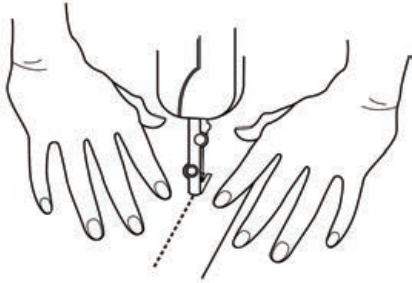


DesignOptions

Dynamic Shirt



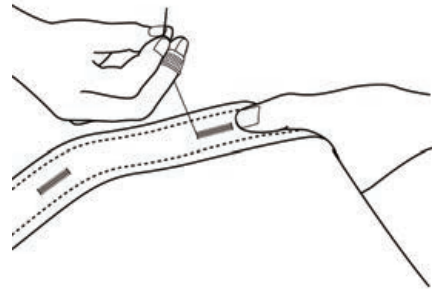
Make



Traditional

Handmade features in the 'traditional' make:

Long button stem



Handmade

Handmade features in the 'handmade' make:

Long button stem and button holes
Front placket (button-side)
Side gusset
Yoke
Armhole
Pick stitching

Collar



Cut Away



Semi Cut Away



Button Down Small



Hidden Button Down



Tab



Classic



Mao Standard



Wing Tip

Collar



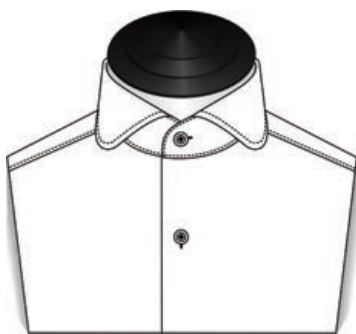
One-piece Collar+Neckband



One-piece Button Down

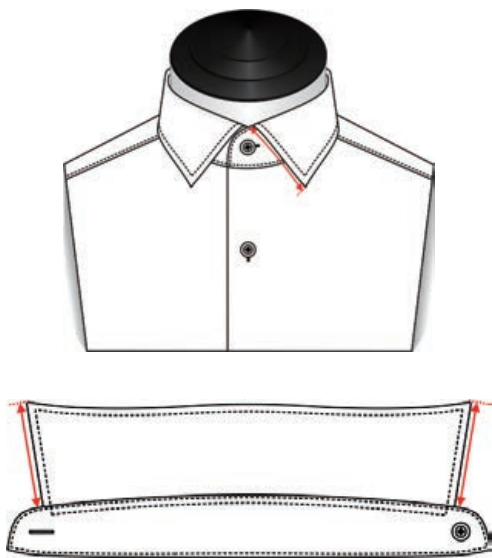


Eyelet Pinned



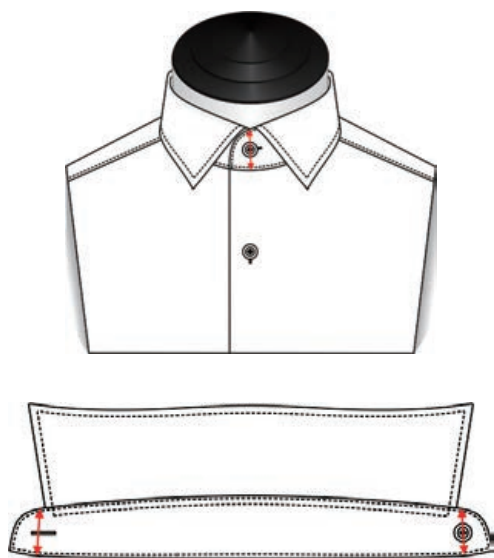
Wide Spread Round

Point Length



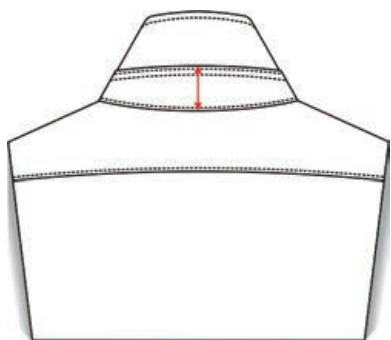
- Point Length 6.5cm | 2 1/2 in
- Point Length 7cm | 2 3/4 in
- Point Length 7.5cm | 3 in
- Point Length 8cm | 3 1/8 in
- Point Length 8.5cm | 3 3/8 in
- Point Length 9cm | 3 1/2 in
- Point Length 9.5cm | 3 3/4 in

Collar Band Front Height



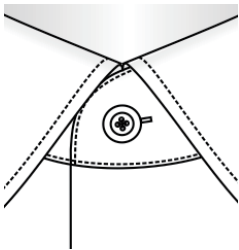
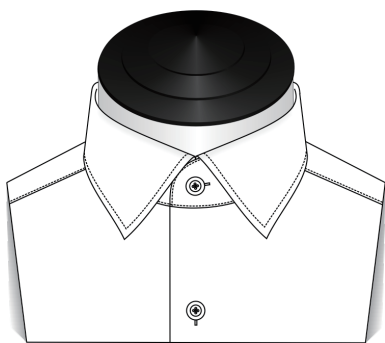
- Extra Low (Front:2cm|3/4 in)
- Low (Front:2.3cm|7/8 in)
- Medium (Front:2.6cm|1 in)
- High (Front:2.9cm|1 1/8 in)
- Extra High (Front:3.2cm|1 1/4 in)
- Extreme High (Front:3.5cm|1 1/2 in)

Collar Band Back Height

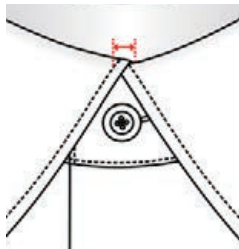


- Extra Low (Back:3.1cm|1 1/4 in)
- Low (Back:3.7cm|1 1/2 in)
- Medium (Back:4.2cm|1 3/4 in)
- High (Back:4.8cm|2 in)
- Extra High (Back:5.4cm|2 1/4 in)
- Extreme High (Back:6cm|2 1/2 in)

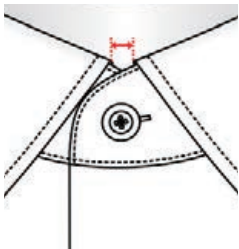
Tie Space



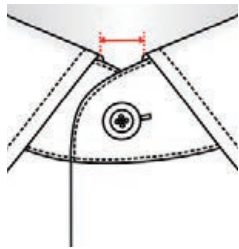
0



-0.6cm | -1/4 in



0.6cm | 1/4 in



1.2cm | 1/2 in

Collar Stays



Removable

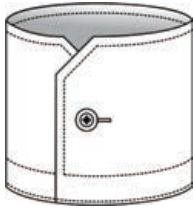


Permanent

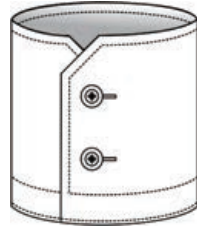


None

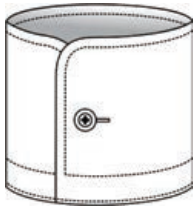
Cuff



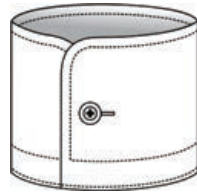
Single 1 Btn



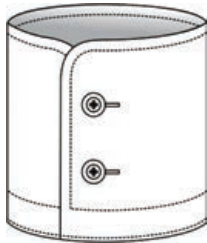
Single 2 Btn



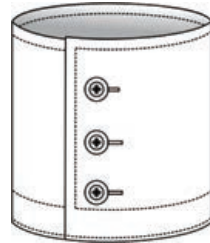
Single Curved 1Btn



Single Curved Narrow 1 Btn



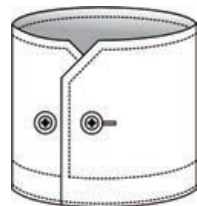
Single Curved 2 Btn



Single 3 Btn



Single Cuff Link



Single Slanted 2 Btn Adj

Cuff



Single Curved 2 Btn Adj



Double



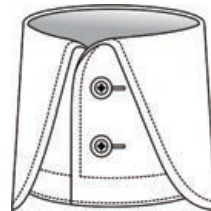
Double Curved



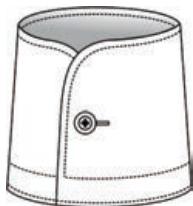
Double Slanted



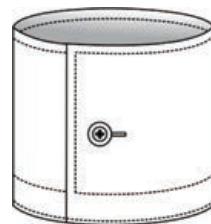
Double with Loop



Napolitan

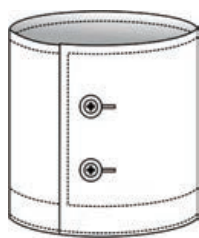


Single Rounded
(only handmade)



Single Square 1 Btn

Cuff



Single Square 2 Btn



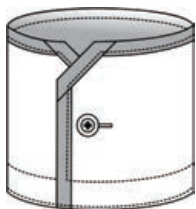
Single 1 Btn Convertible



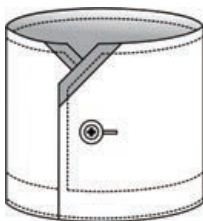
Mitred French Cuff



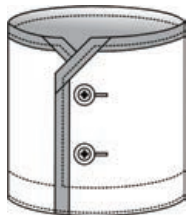
Single 1Btn Link Fastening
(handmade)



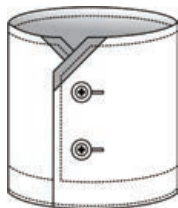
Contrast Single 1Btn-ALL



Contrast Single 1Btn-HALF

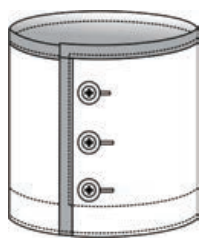


Contrast Single 2 Btn-ALL



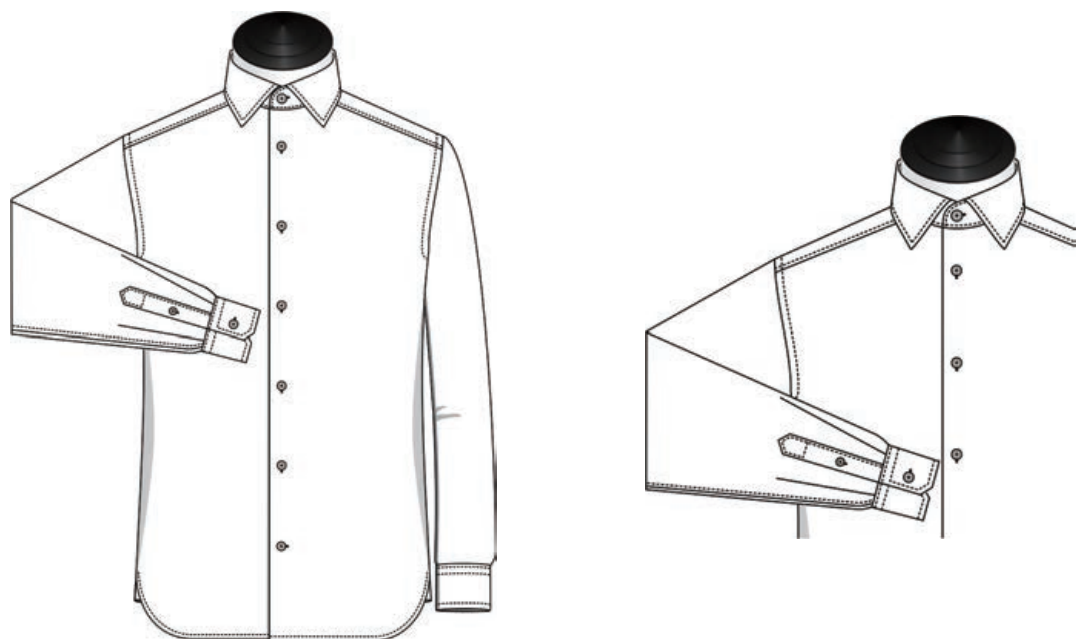
Contrast Single 2 Btn-HALF

Cuff

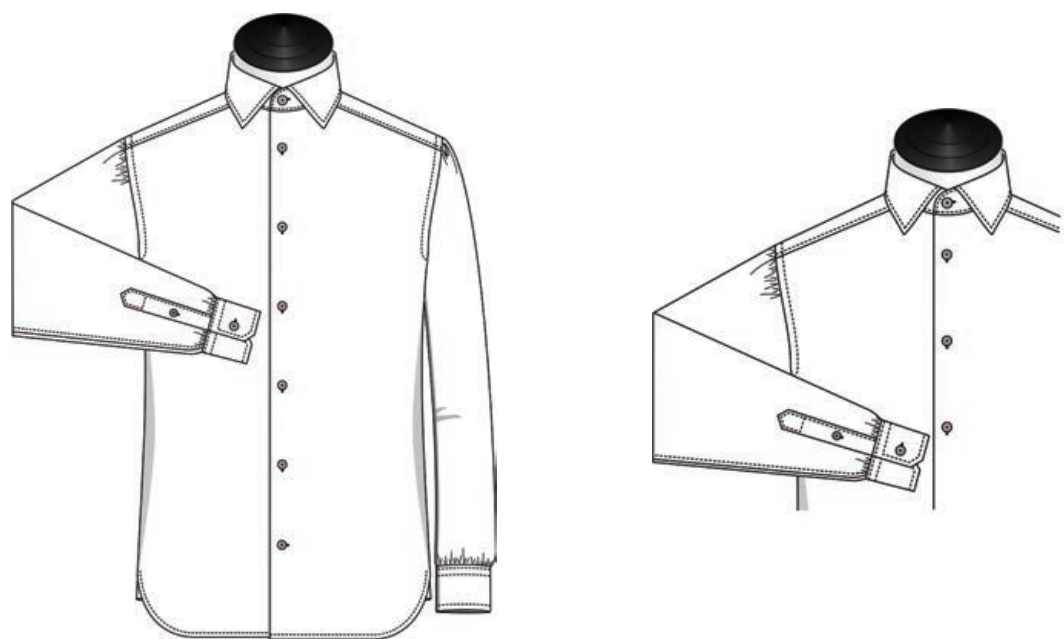


Contrast Single 3 Btn-ALL

Sleeve Type

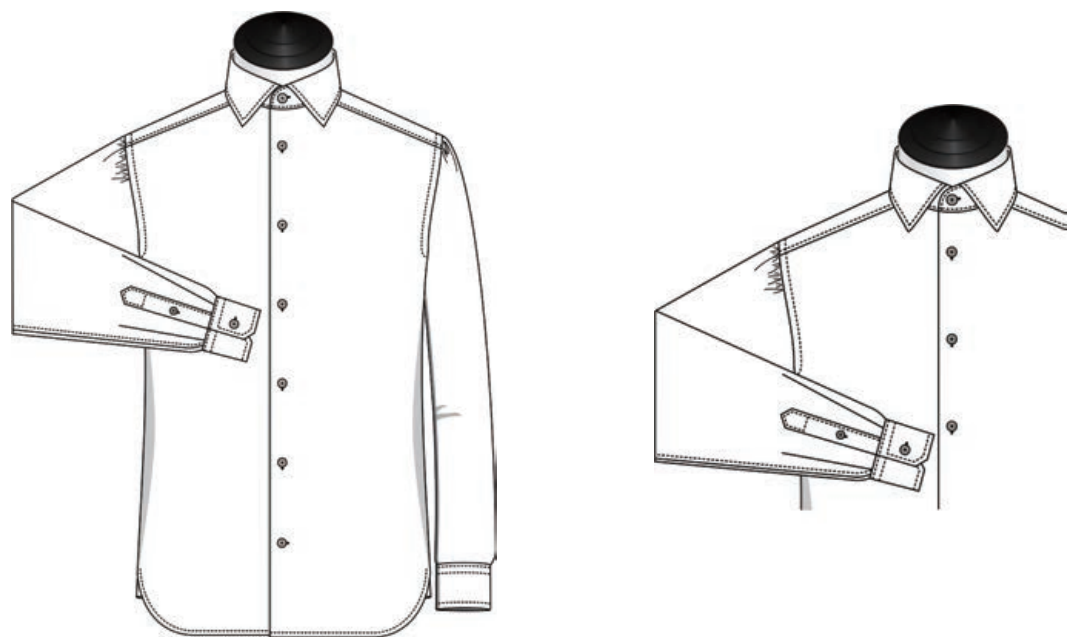


Long Sleeves



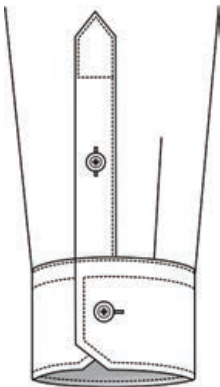
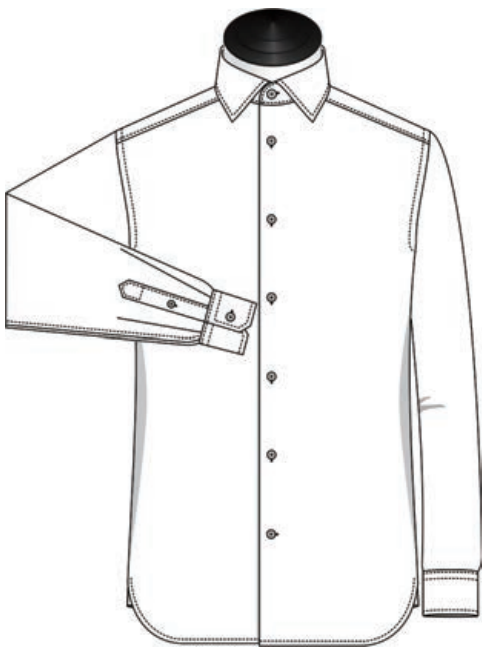
Long with Pleats (c.w.traditional make)
(+3cm Added To Finished 1/2 Upperarm Measurement)

Sleeve Type

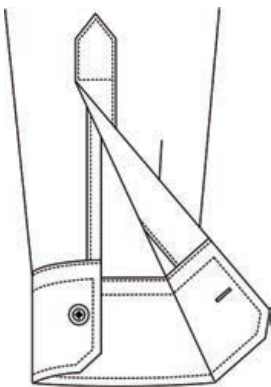
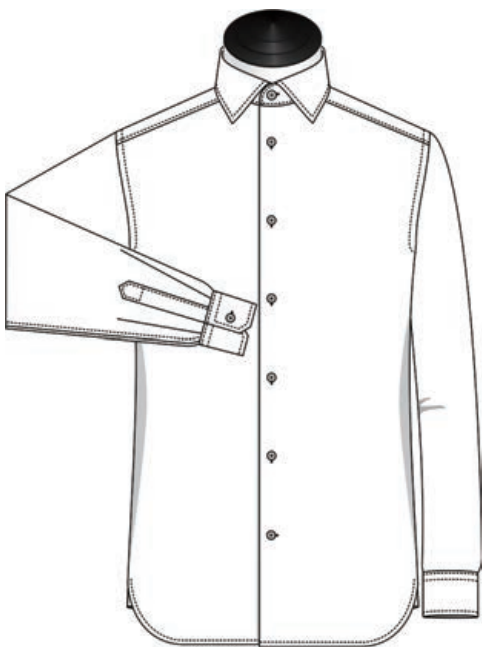


Long W Sleeve Head Pleats(HM Only)
(+3cm Added To Finished 1/2 Upperarm Measurement)

Sleeve Vent

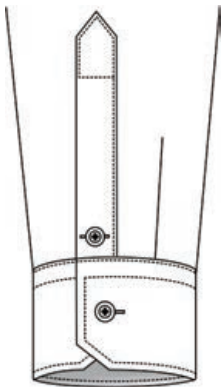
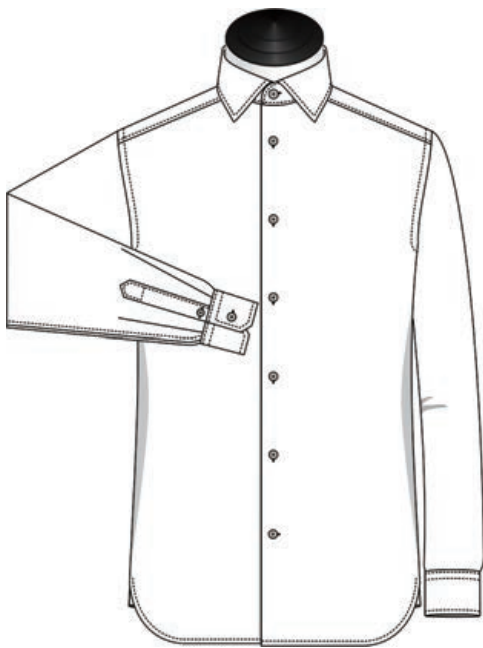


With Button

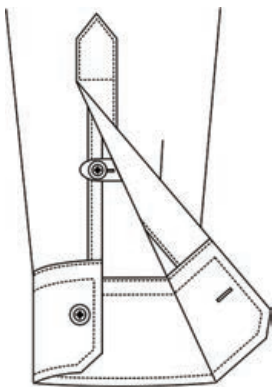
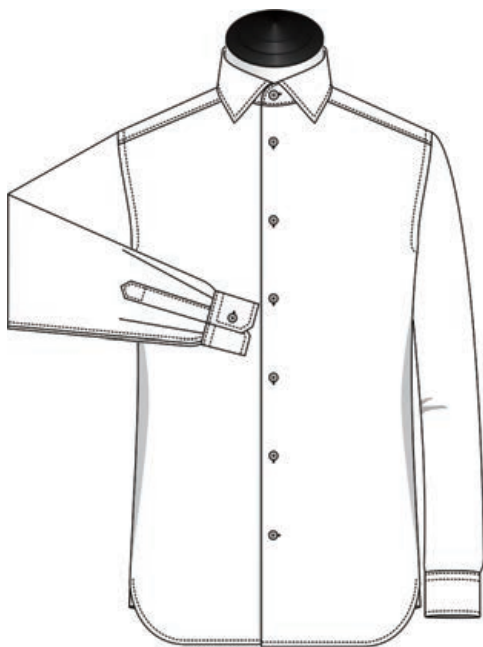


No Button

Sleeve Vent

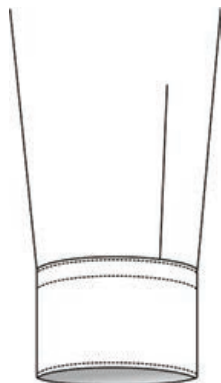


With Low Button

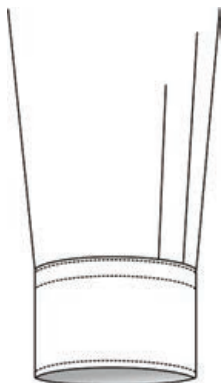


Hidden Button

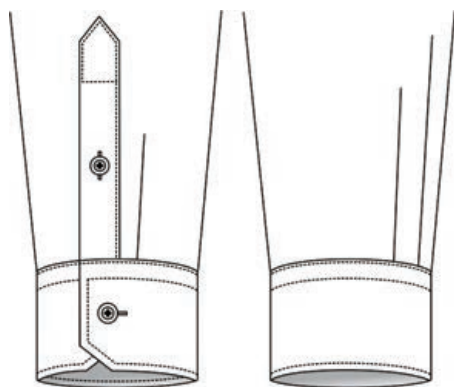
Sleeve Pleats



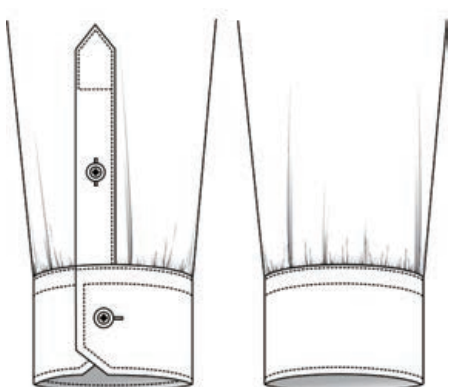
1 Pleats



2 Pleats

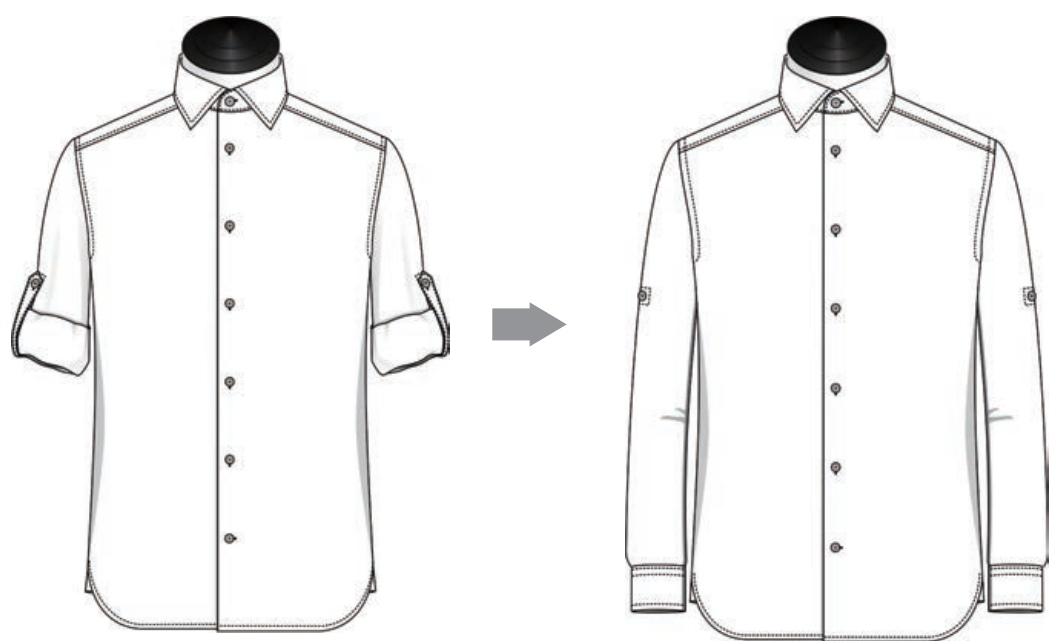


3 Pleats

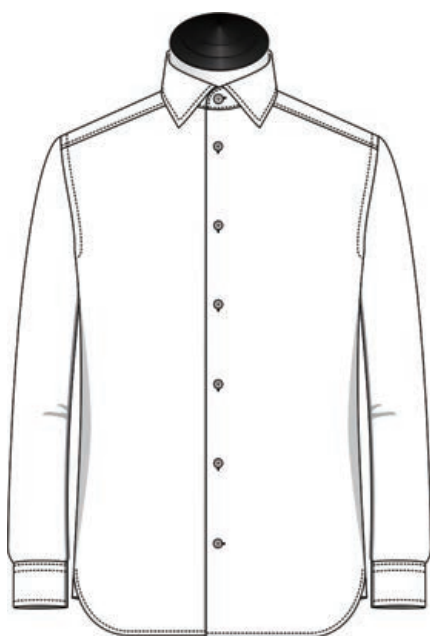


Small Gathered Pleats

Sleeve Strap



Yes



No

Front Placket



Classic Placket

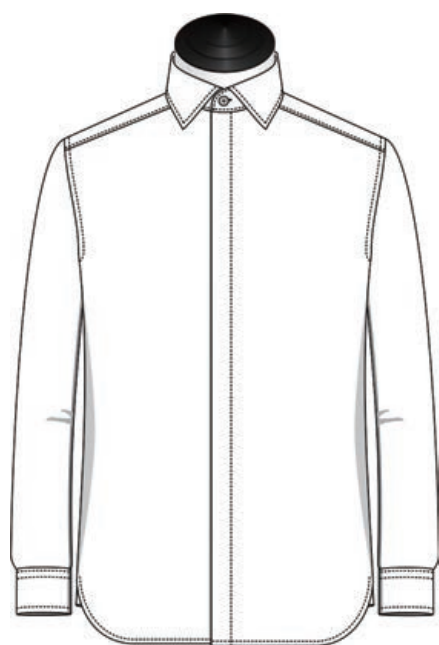


Narrow Placket

Front Placket

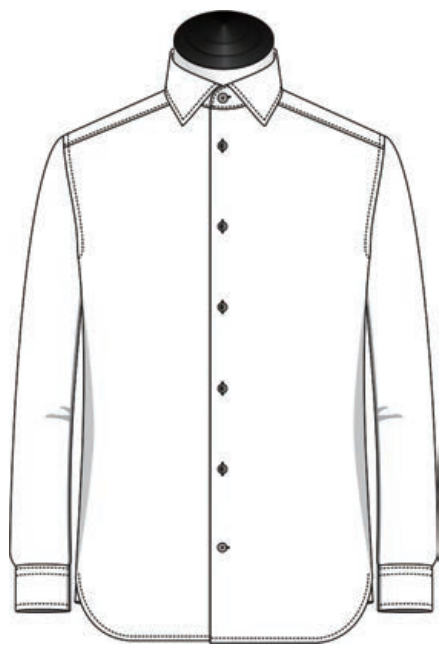


No Placket

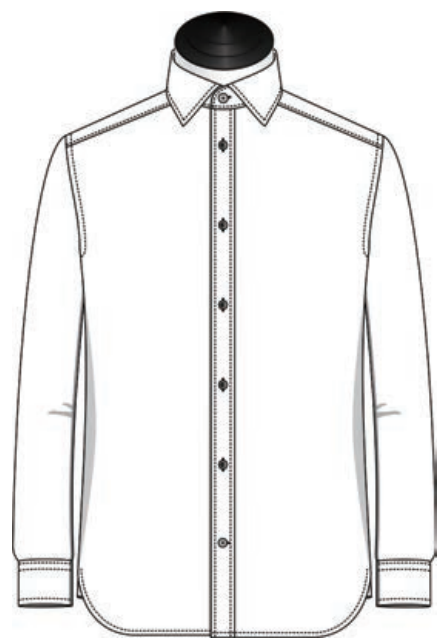


Fly Front

Front Placket



Plain with Studs



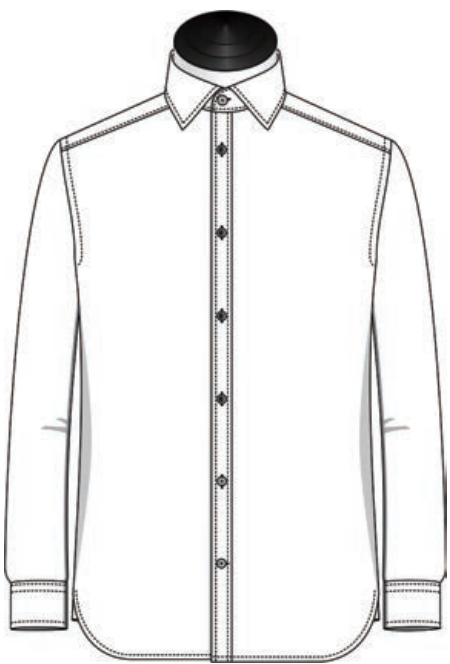
Classic Placket with Studs

Narrow Placket with Studs

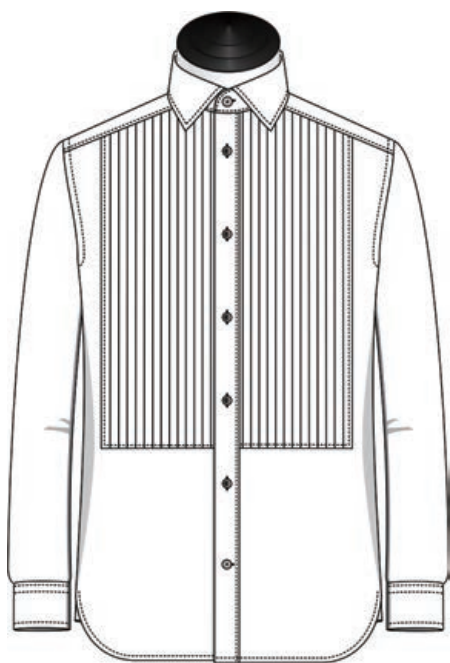
Front Placket



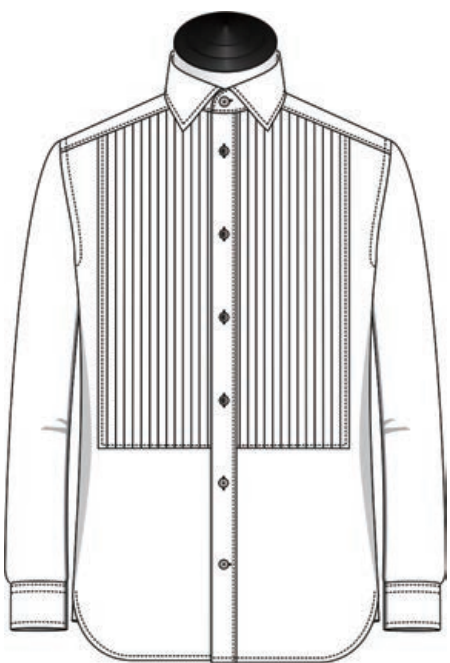
Classic Placket with 4 Studs



Narrow Placket with 4 Studs

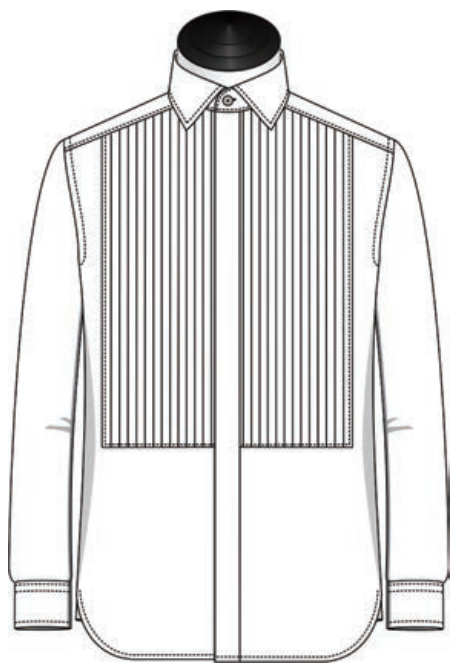


Formal Front with Classic
Placket & Studs



Formal Front with Classic
Placket & 4 Studs

Front Placket



Formal Fly Front



Pop-Over 1B Pointed



Pop-Over 2B Pointed



Pop-Over 3B Pointed

Front Placket



Pop-Over 1B Square



Pop-Over 2B Square

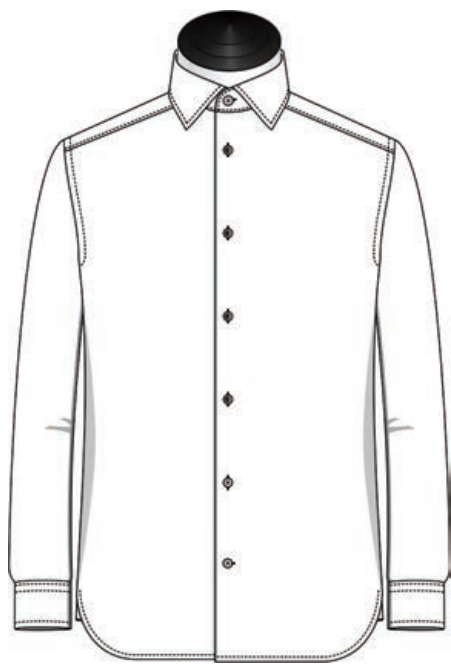


Pop-Over 3B Square



One-piece Collar Placket

Front Placket



Plain with 4 Studs

Front Placket



Contrast Piping Both Sides 3.5CM



Contrast Piping Right Side 3.5CM

Front Placket

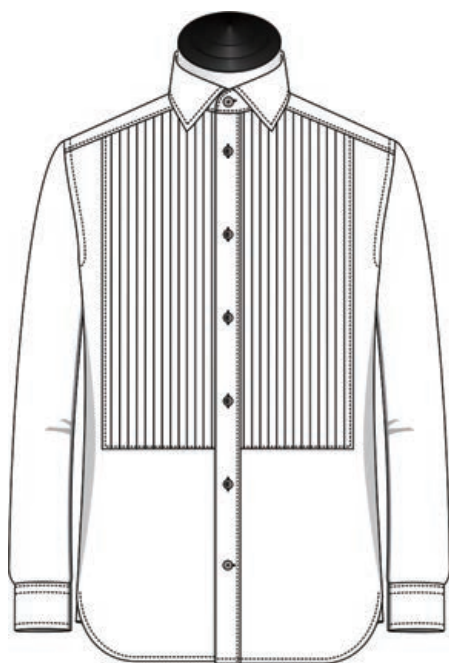


Contrast Piping Both Sides 2.5CM



Contrast Piping Right Side 2.5CM

Formal Pleats Length (w studs)

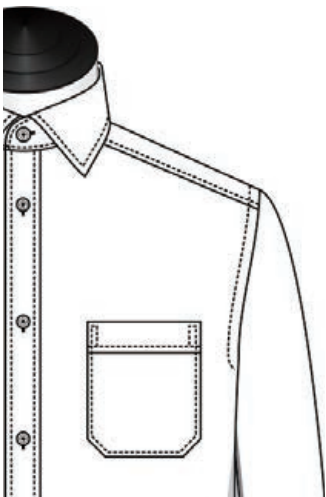
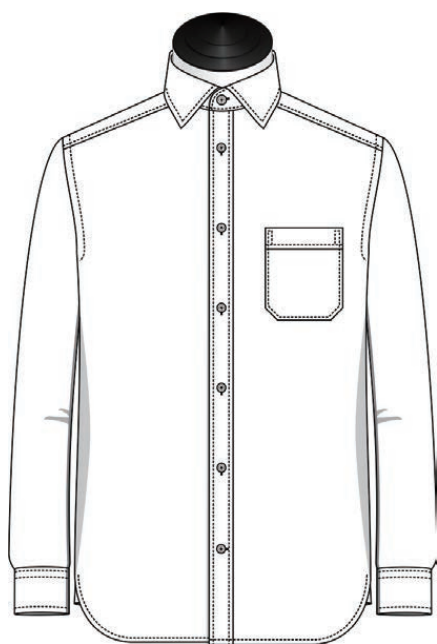


Standard

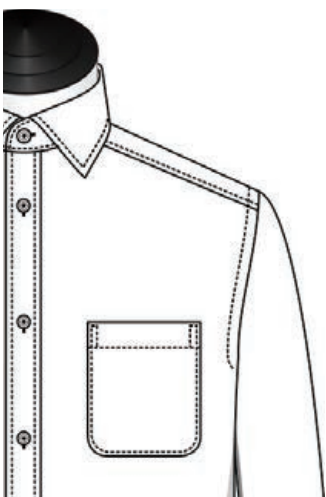
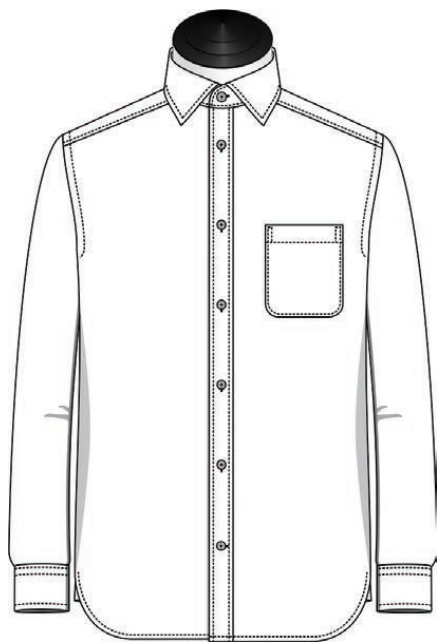


10cm Up From Bottom

Chest Pocket

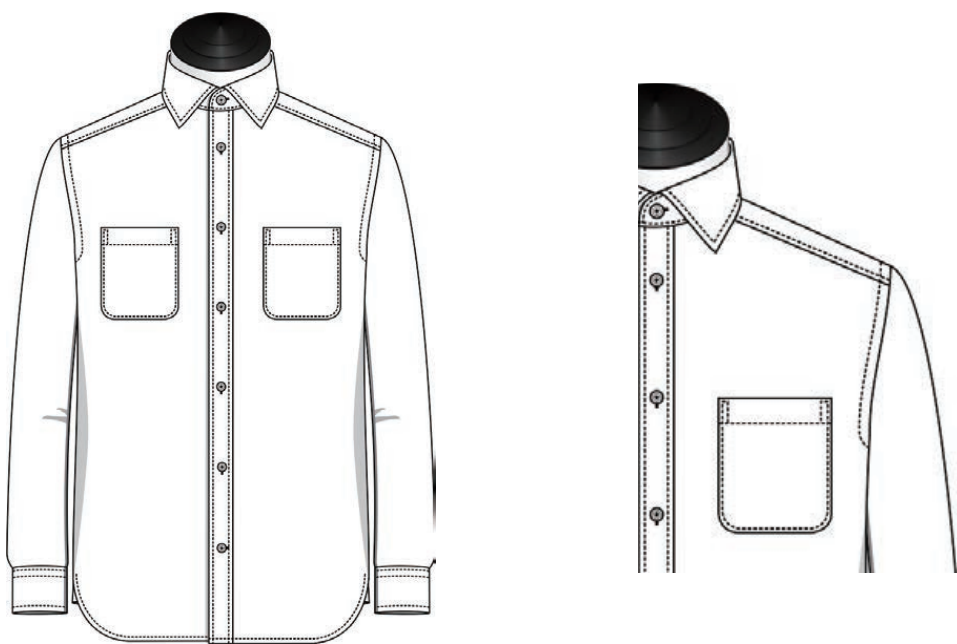


1 With Fold

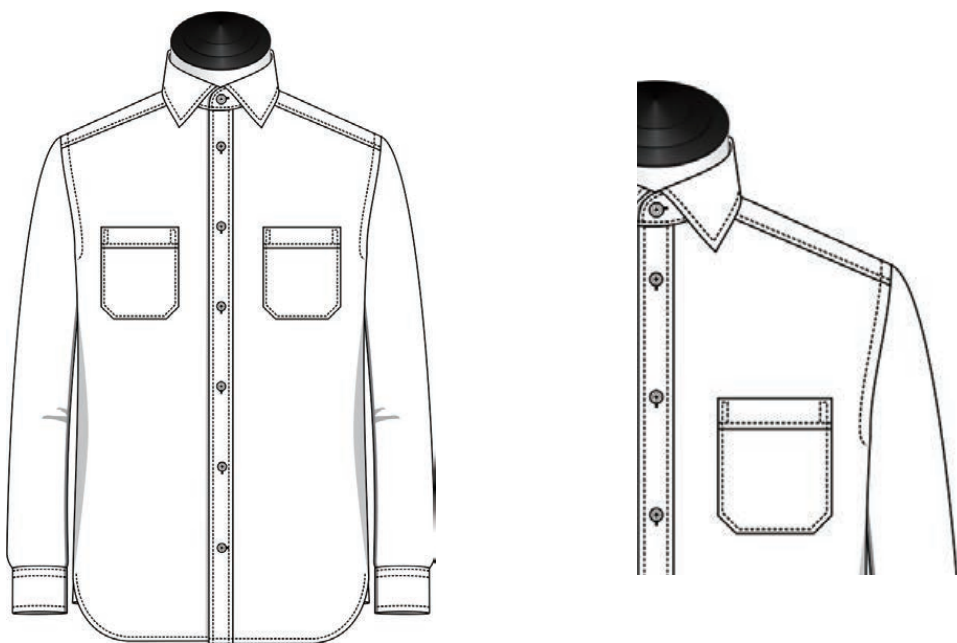


1 Without Fold

Chest Pocket

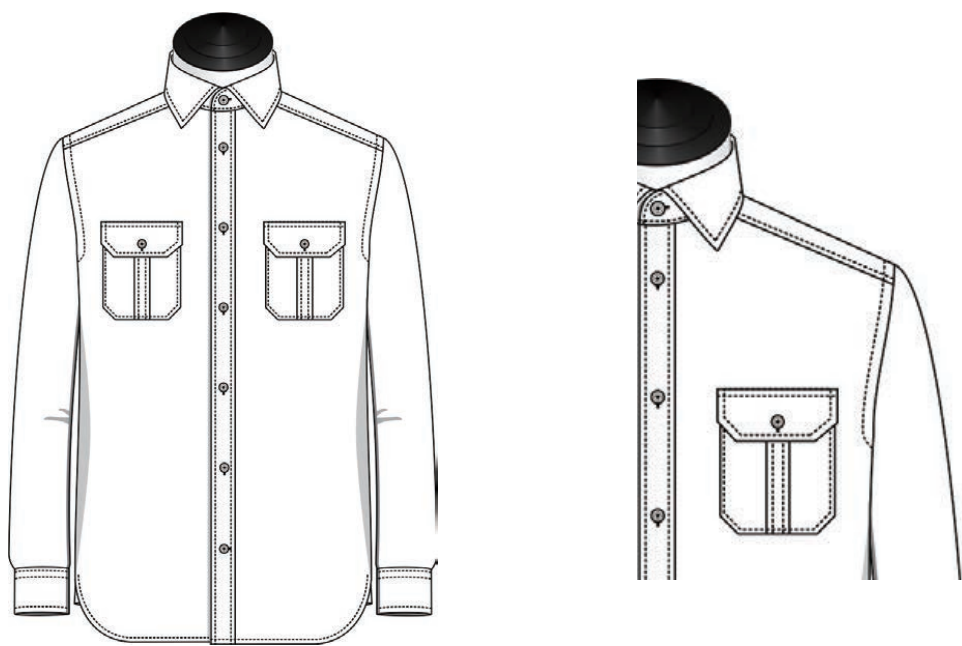


2 Without Fold

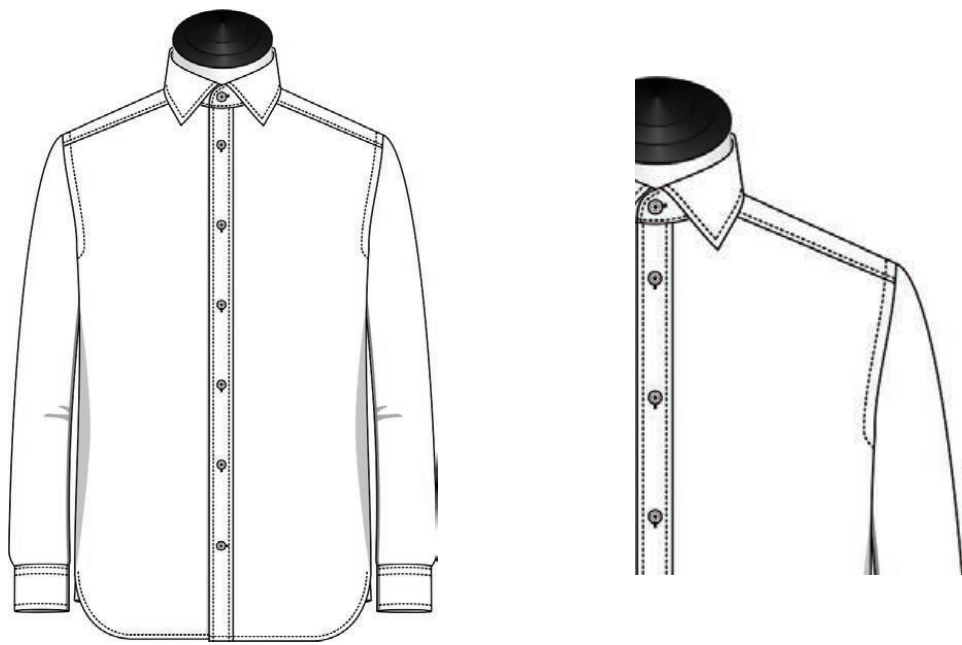


2 With Fold

Chest Pocket

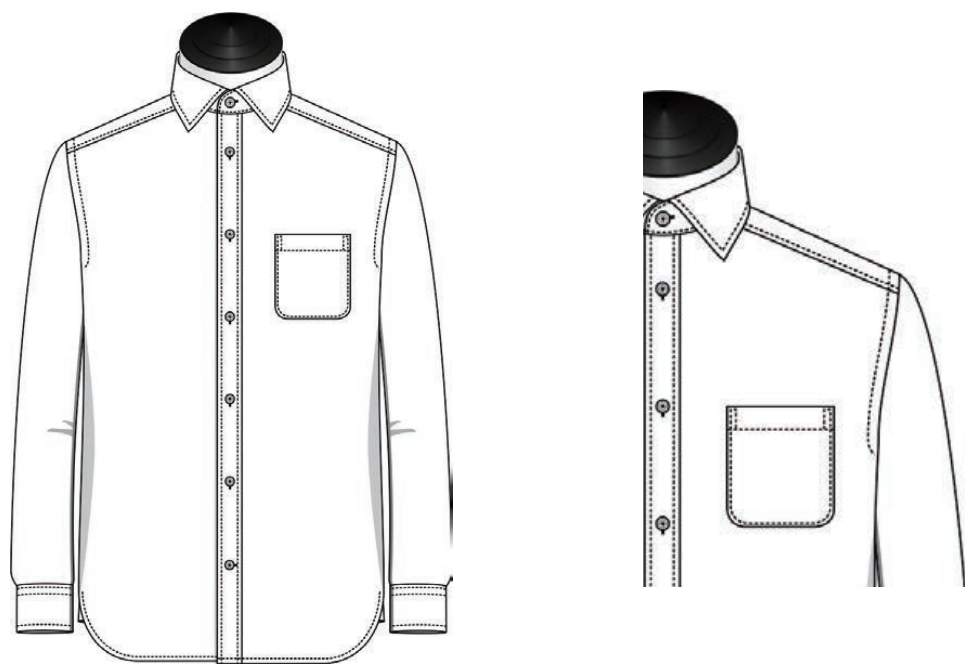


2 With Flap & Btn



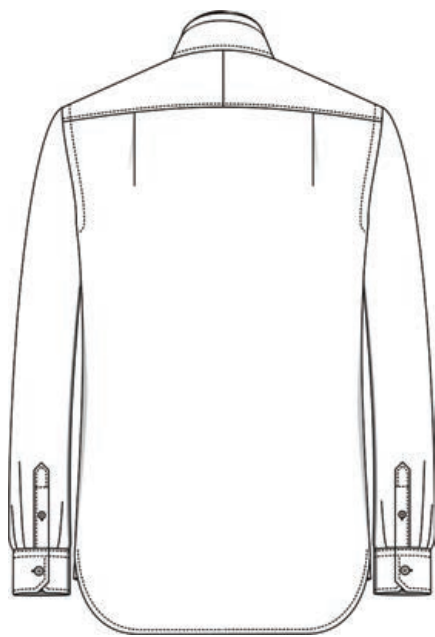
None

Chest Pocket

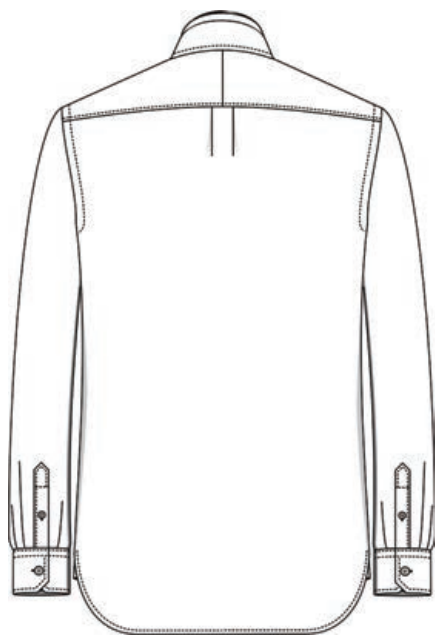


1 Without Fold (S)

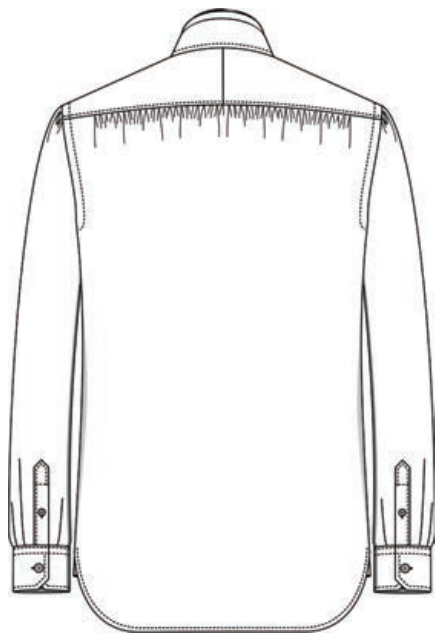
Back Pleats



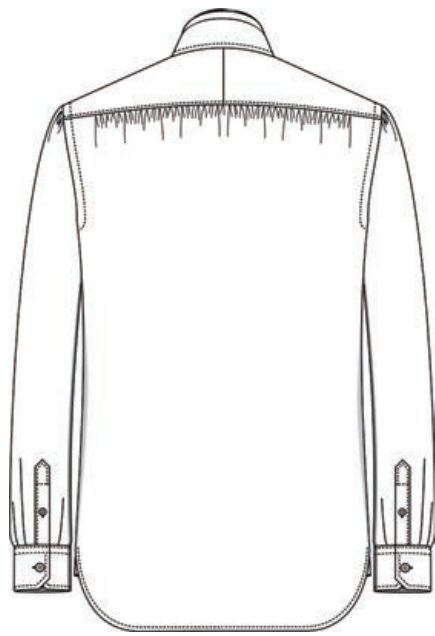
Side Pleats



Center Pleat

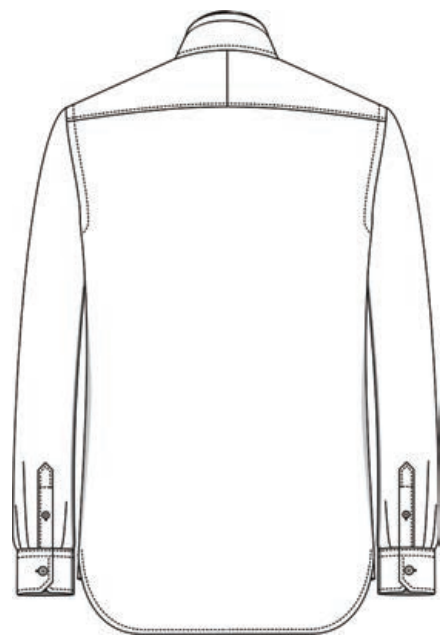


Small Pleats (c.w. traditional make)



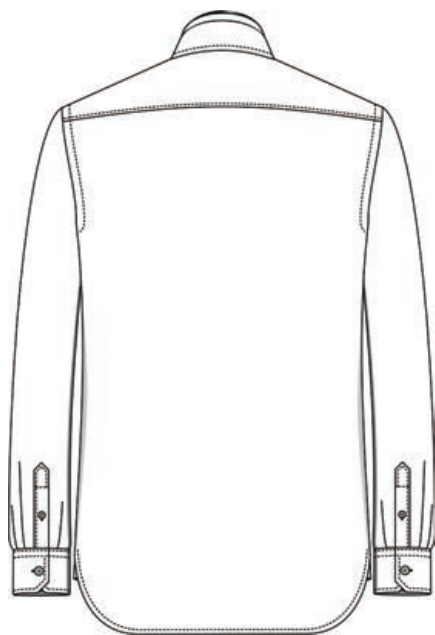
Small Pleats (only HM)

Back Pleats

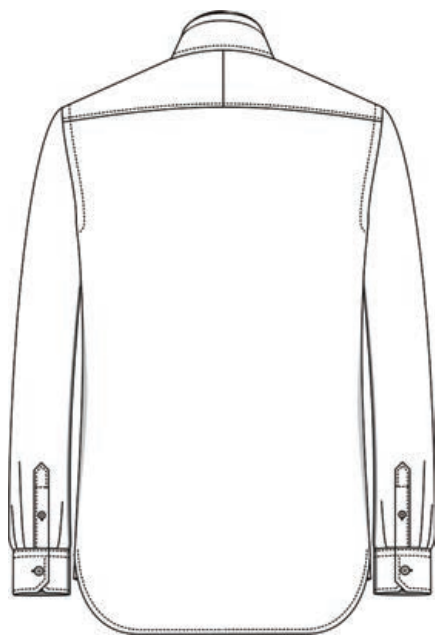


No Pleats

Yoke Type

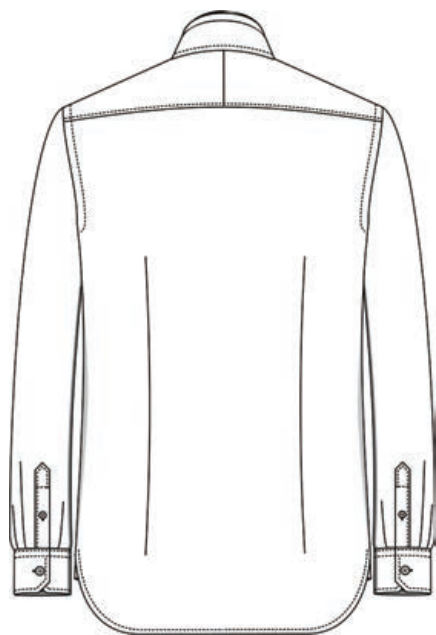


1 Piece

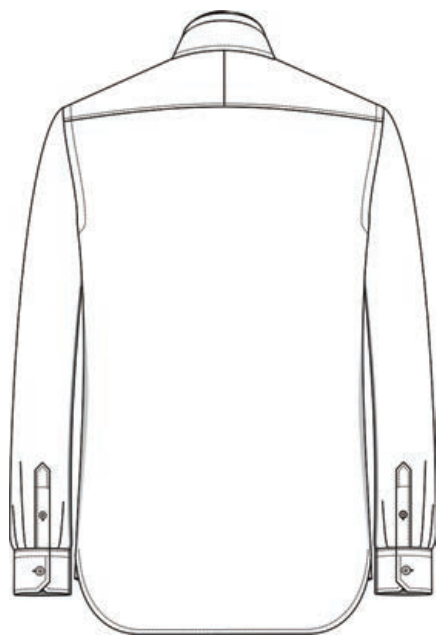


2 Pieces (Split)

Back Darts

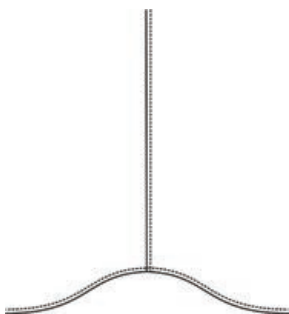


With

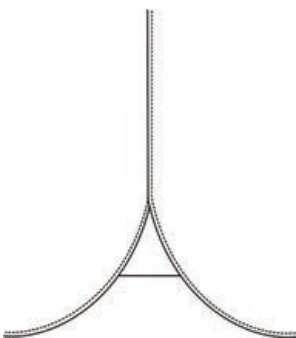


Without

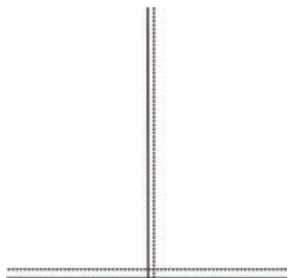
Bottom



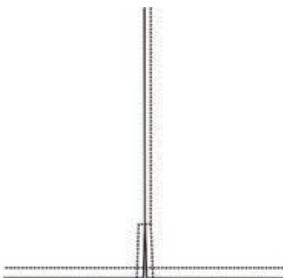
Normal(Curved)



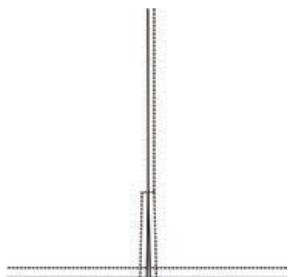
Large rounded bottom with PS



Square bottom no vents

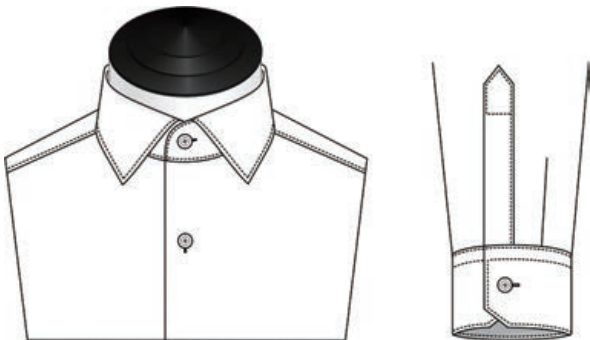


Square bottom with 5cm vents

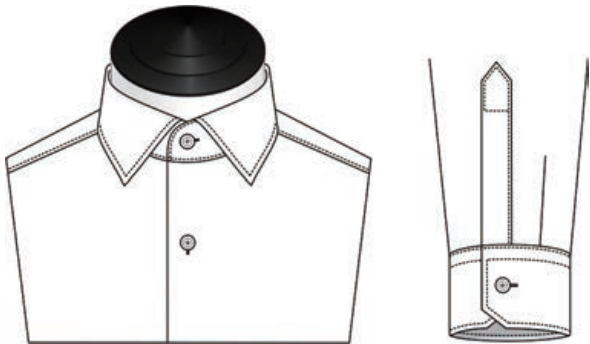


Square bottom with 9cm vents

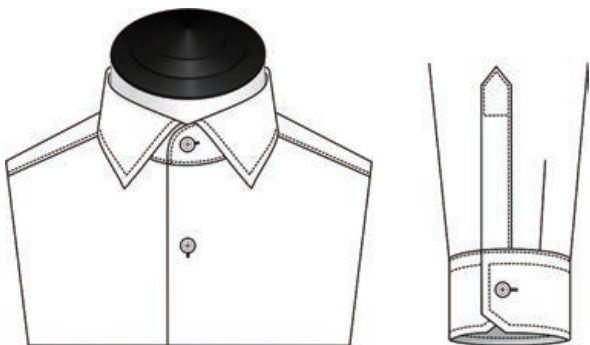
Stitching From Edge



1mm / Edge

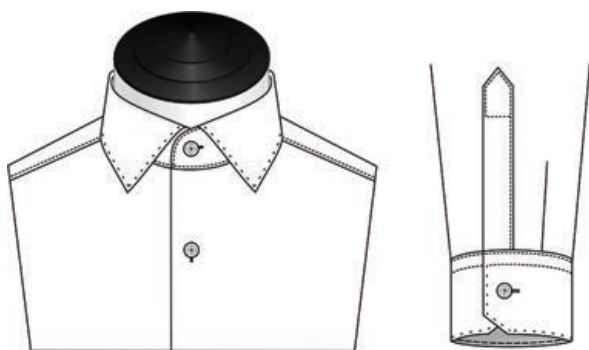


3mm / 1/8 in

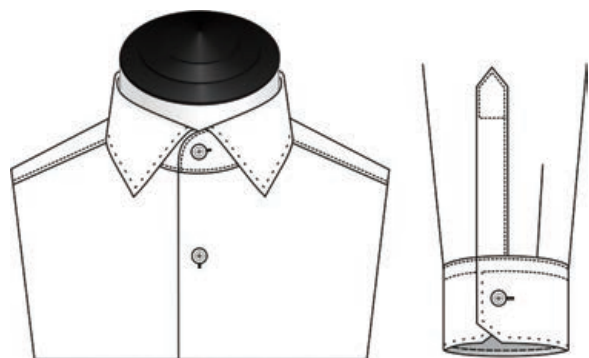


6mm / 1/4 in

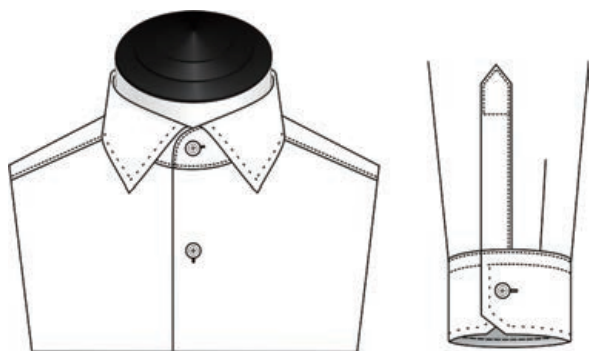
Stitching From Edge



1mm AMF/ Edge



3mm AMF/ 1/8in



6mm AMF/ 1/4in

Button Attachment

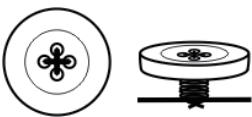


Cross

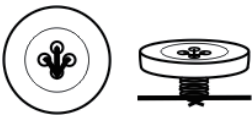


Lily

Button Attachment

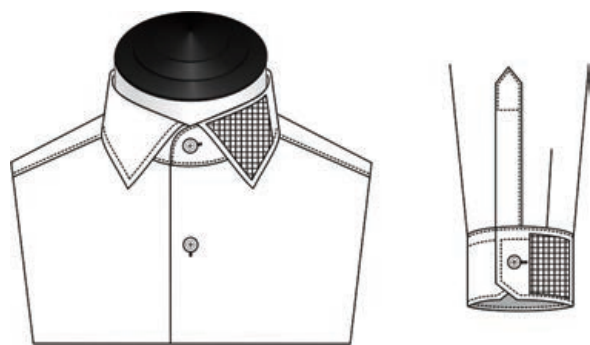


Cross(winding by machine)

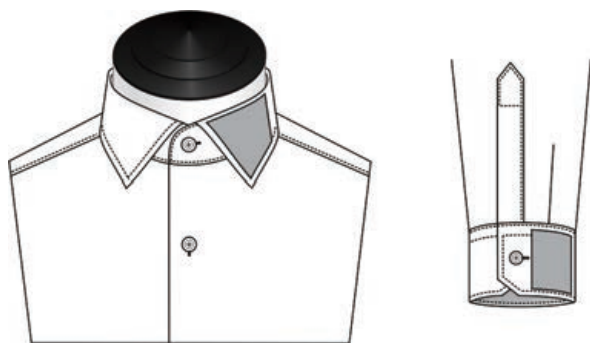


Lily(winding by hand)

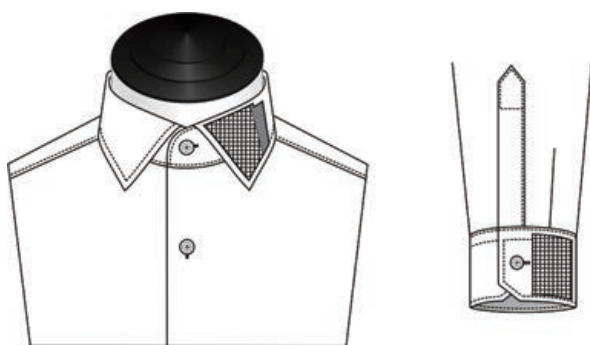
Fusing



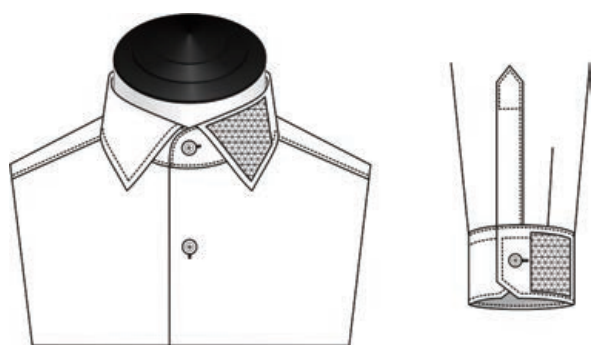
Standard



Soft

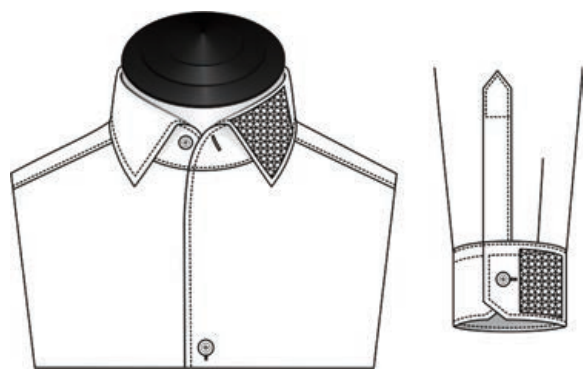


Firm

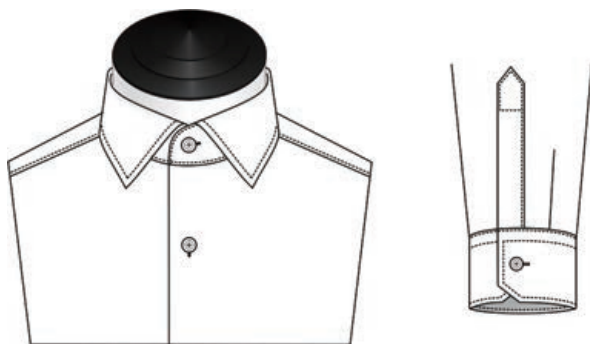


Pop-Over Fusing

Fusing

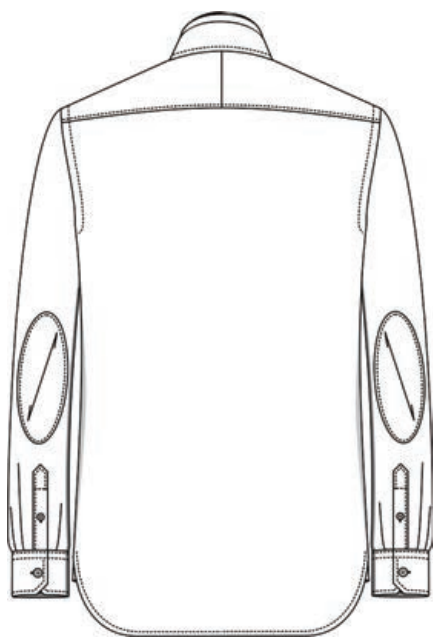


One-piece Collar Fusing

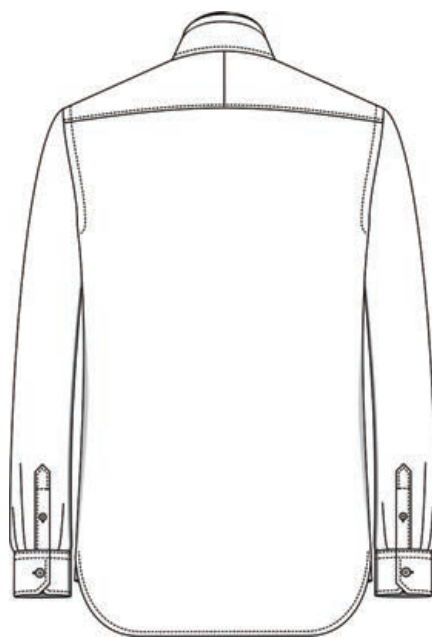


None

Elbow Patches

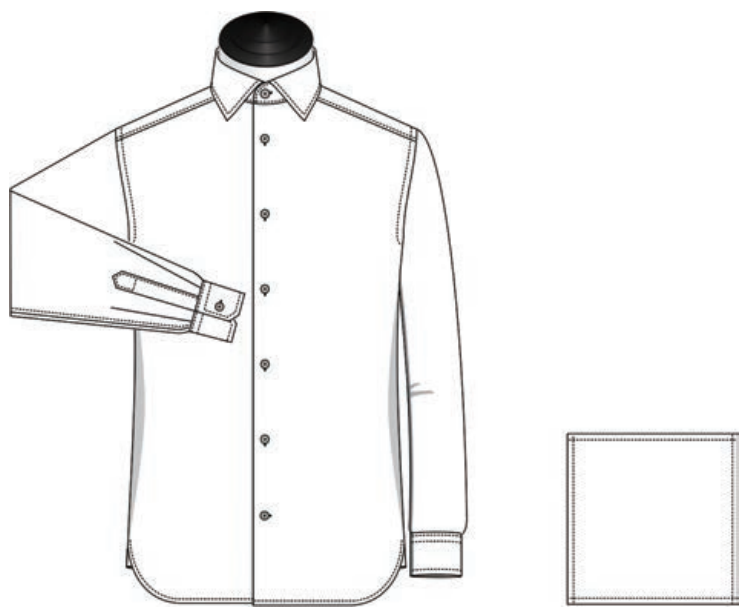


Yes



No

Handkerchief



Yes



No

Contrast



Contrast Whole Collar & Neckband



Contrast Inside Neckband



Contrast Whole Neckband



Contrast Bottom Neckband (Piping)

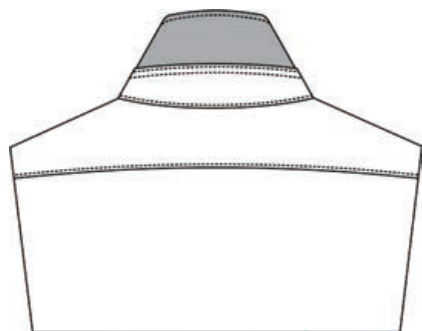


Contrast Face Collar

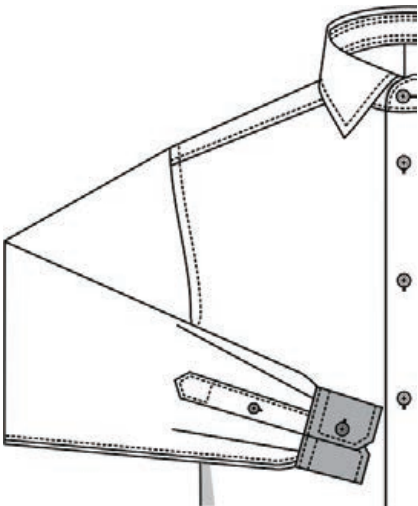


Contrast Out Neckband

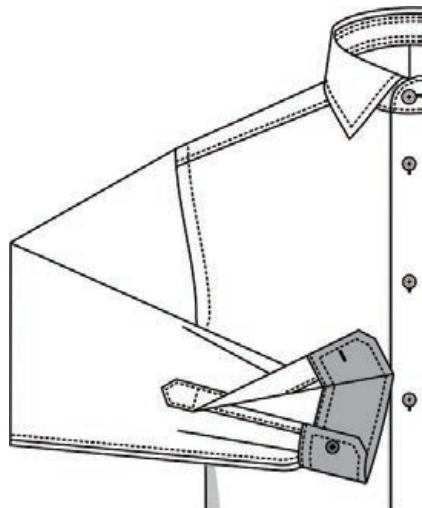
Contrast



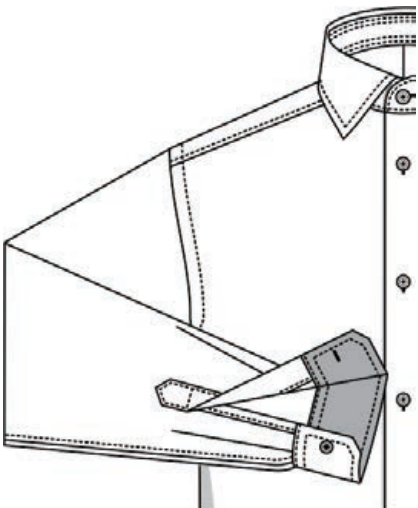
Contrast Under Collar



Contrast Out Cuff

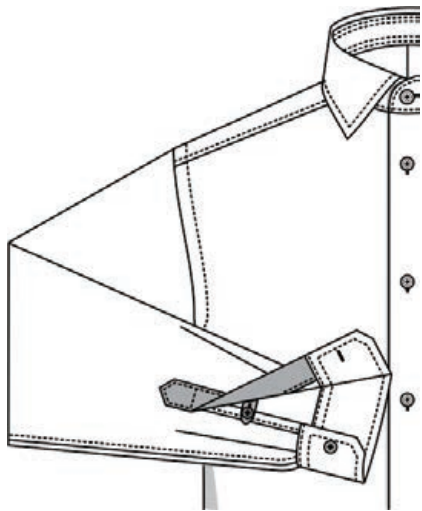


Contrast Total Cuff

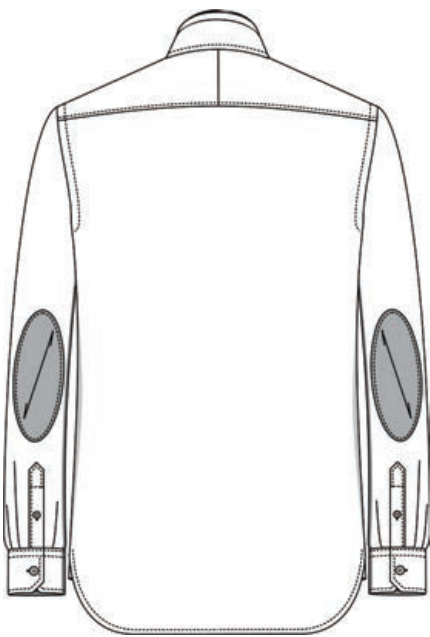


Contrast Inside Cuff

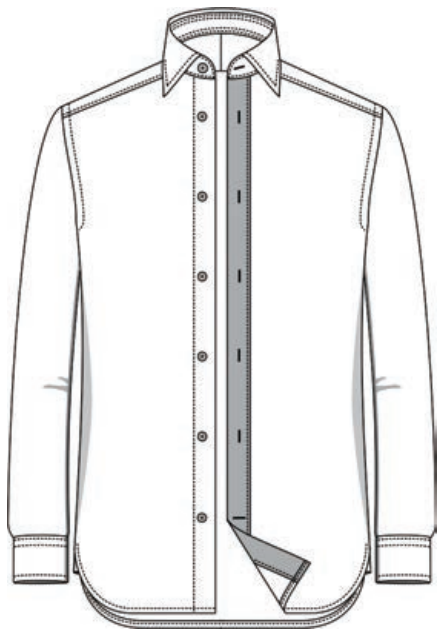
Contrast



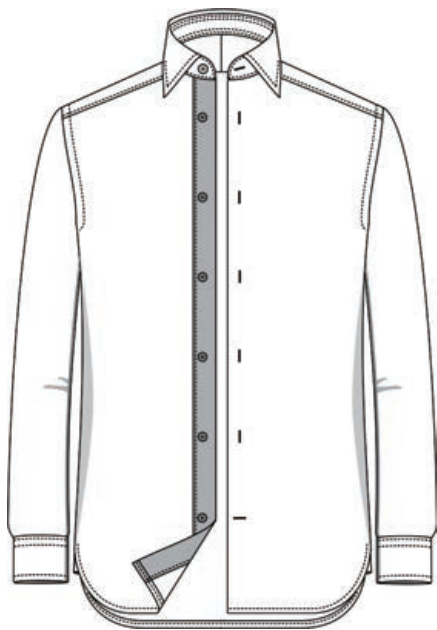
Contrast Sleeve Placket



Contrast Elbow Patches

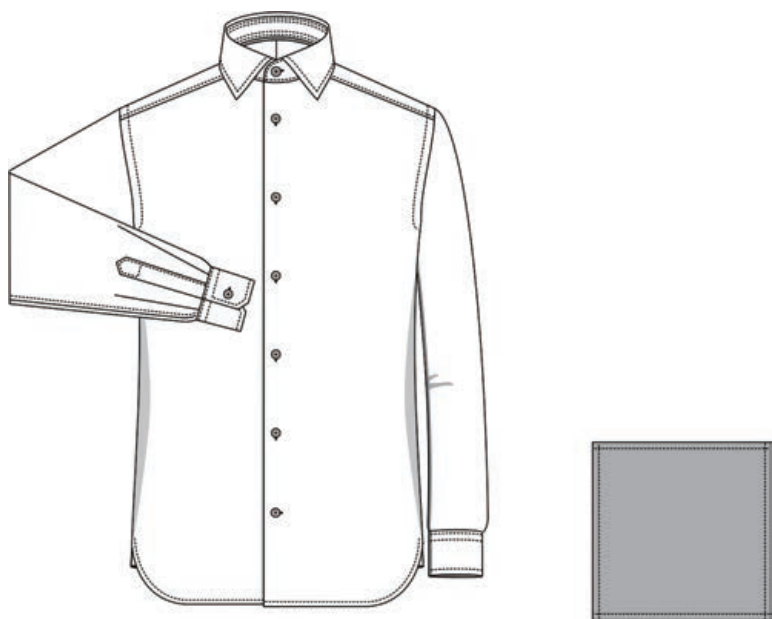


Contrast Buttonhole-Side Placket



Contrast Buttons-Side Placket

Contrast



Contrast Handkerchief

Collar Edge Contrast



Inner Edge Only

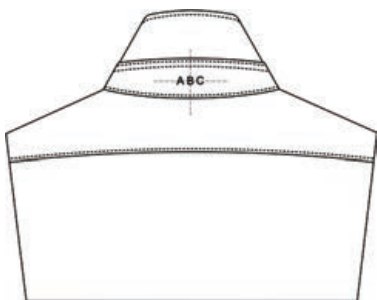


Full Edge

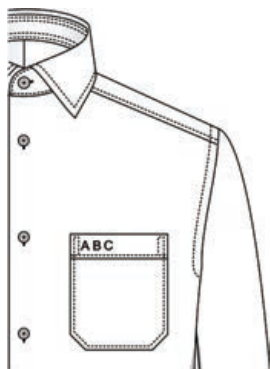
Monogram Position



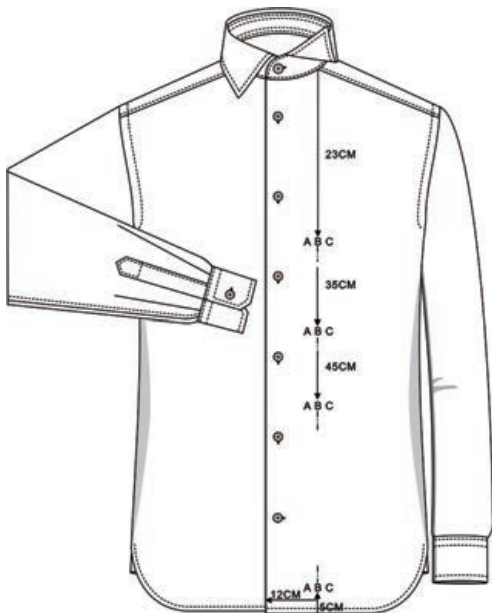
Inside Neckband



Outside Neckband



Chest Pocket



Body 23cm Down Body 45cm Down
Body 35cm Down Body 5cm Up

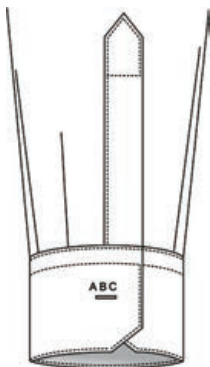


Left Collar Leaf

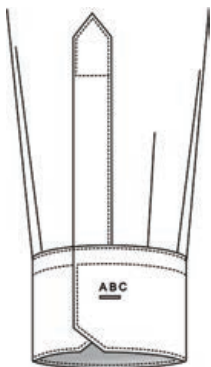


Handkerchief Top Left Corner

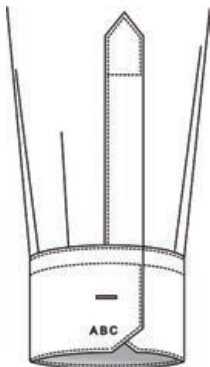
Monogram Position



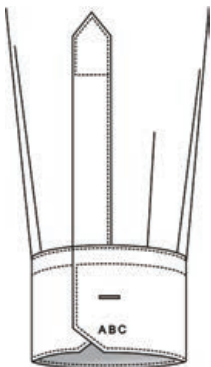
L. Cuff Above



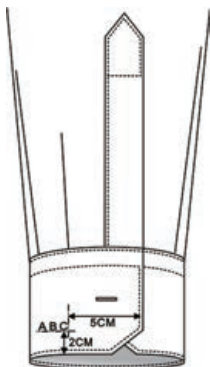
R. Cuff Above



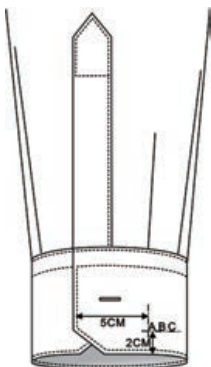
L. Cuff Under



R. Cuff Under

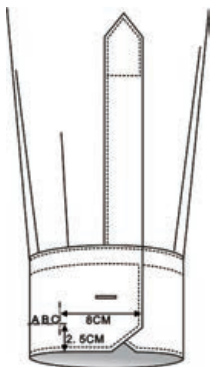


L. Cuff Under
(5cm indent)

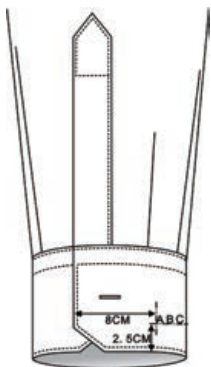


R. Cuff Under
(5cm indent)

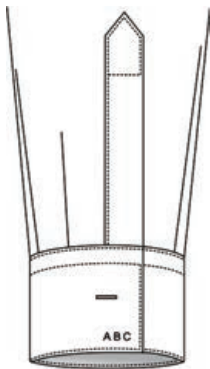
Monogram Position



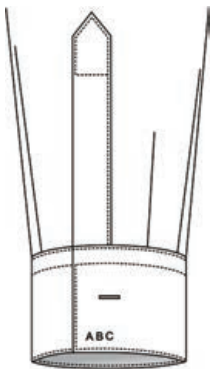
L. Cuff Under Btnhole
(8cm indent)



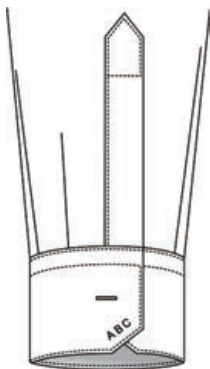
R. Cuff Under Btnhole
(8cm indent)



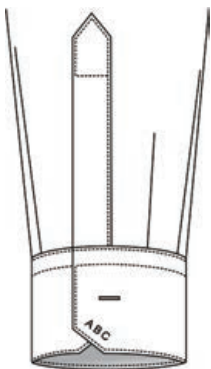
L. Cuff Straight



R. Cuff Straight

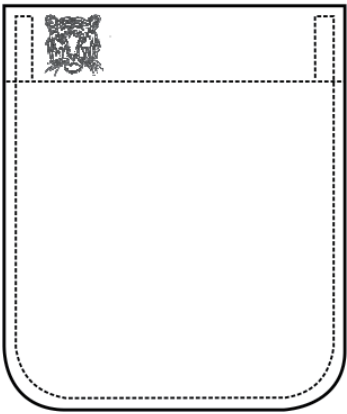
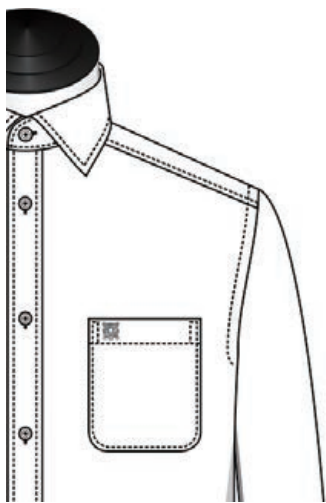


L. Cuff Slant



R. Cuff Slant

Shirt Pocket Emblem



Breast Pocket



MP01



MP02



MP03



MP04